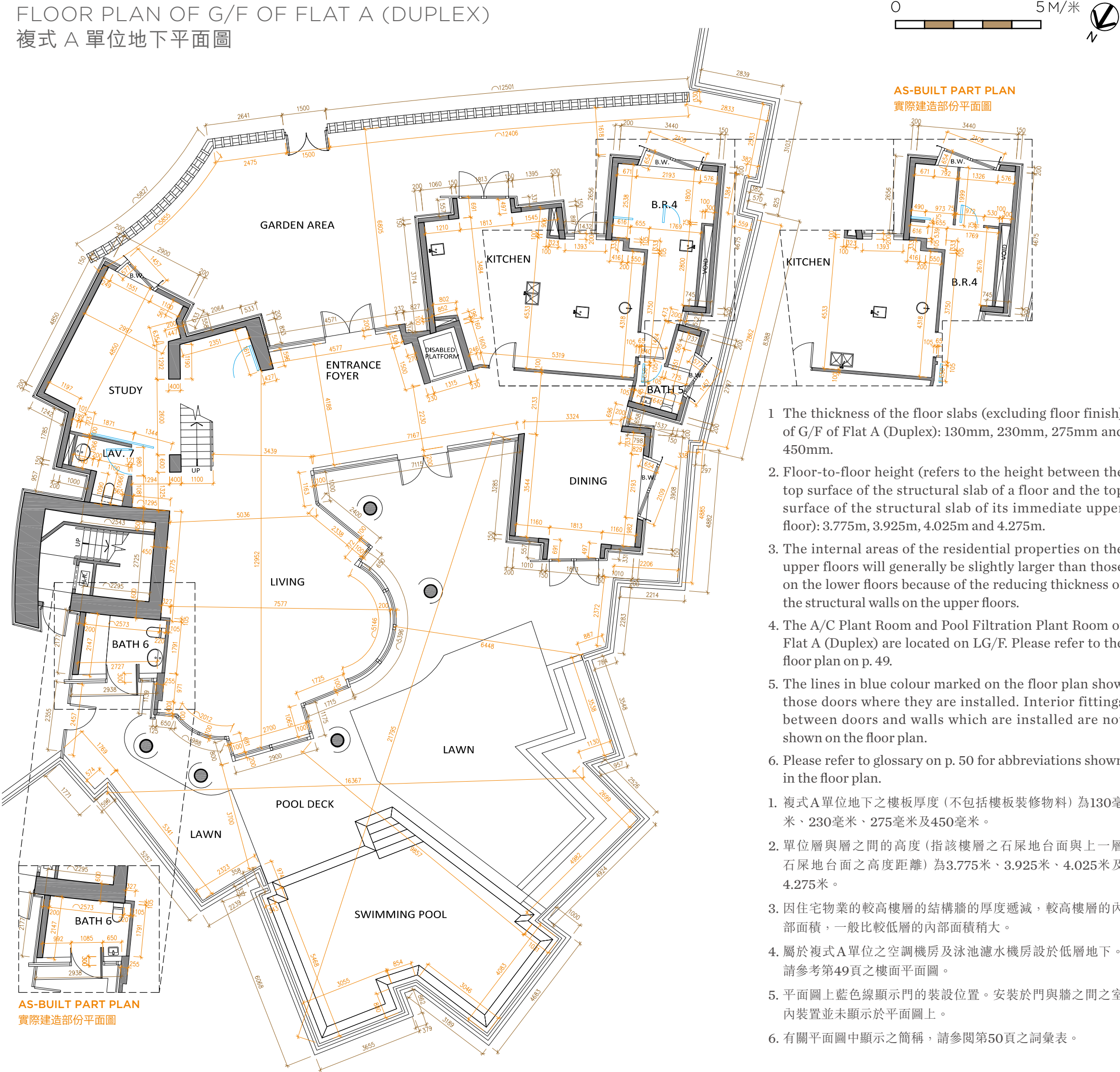


FLOOR PLANS OF RESIDENTIAL PROPERTIES IN THE DEVELOPMENT

發展項目的住宅物業的樓面平面圖

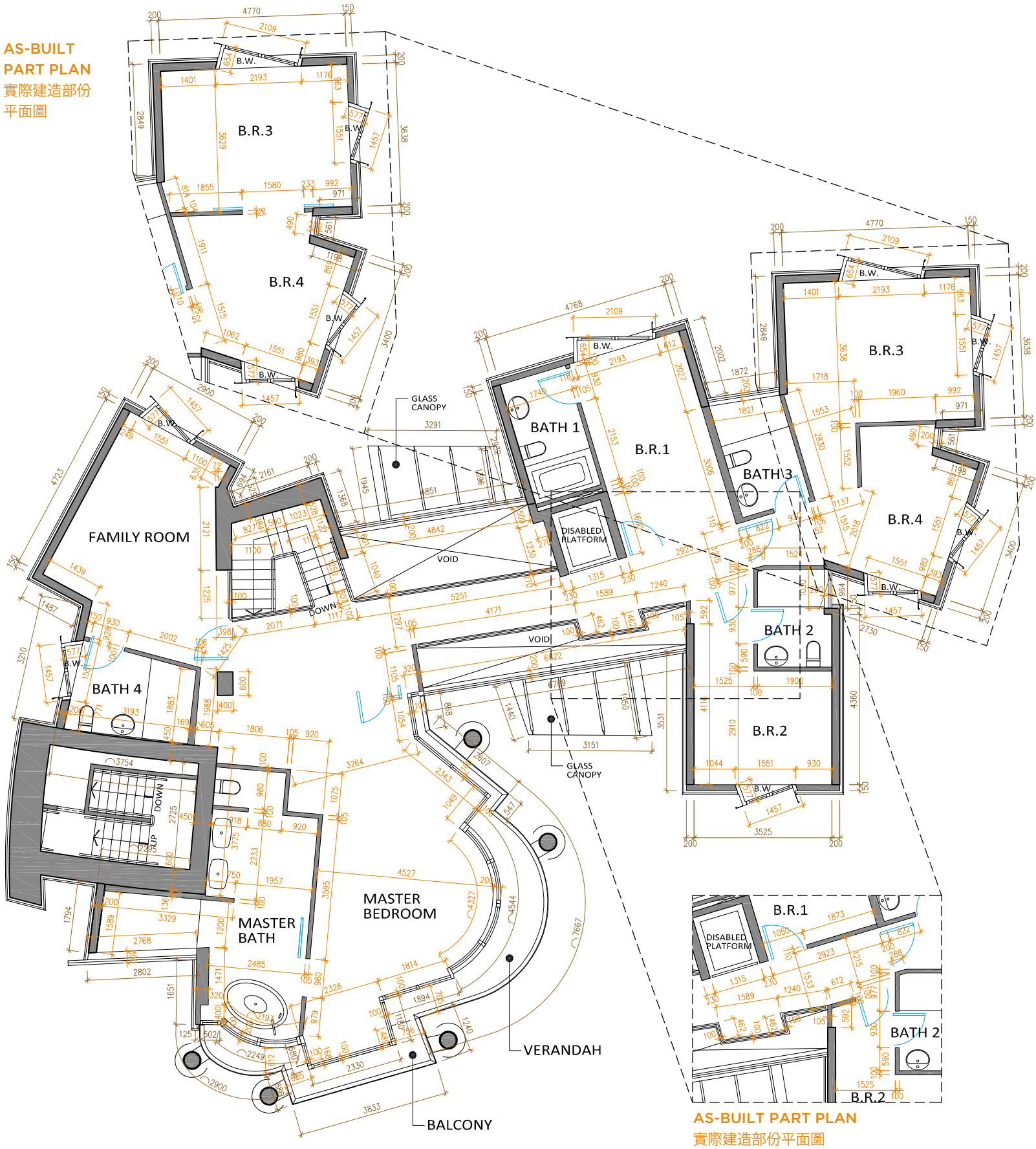
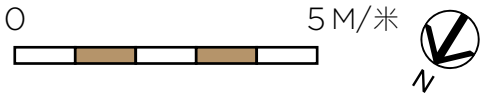
FLOOR PLAN OF G/F OF FLAT A (DUPLEX)

複式 A 單位地下平面圖



- 1 The thickness of the floor slabs (excluding floor finish) of G/F of Flat A (Duplex): 130mm, 230mm, 275mm and 450mm.
 2. Floor-to-floor height (refers to the height between the top surface of the structural slab of a floor and the top surface of the structural slab of its immediate upper floor): 3.775m, 3.925m, 4.025m and 4.275m.
 3. The internal areas of the residential properties on the upper floors will generally be slightly larger than those on the lower floors because of the reducing thickness of the structural walls on the upper floors.
 4. The A/C Plant Room and Pool Filtration Plant Room of Flat A (Duplex) are located on LG/F. Please refer to the floor plan on p. 49.
 5. The lines in blue colour marked on the floor plan show those doors where they are installed. Interior fittings between doors and walls which are installed are not shown on the floor plan.
 6. Please refer to glossary on p. 50 for abbreviations shown in the floor plan.
1. 複式A單位地下之樓板厚度（不包括樓板裝修物料）為130毫米、230毫米、275毫米及450毫米。
 2. 單位層與層之間的高度（指該樓層之石屎地台面與上一層石屎地台面之高度距離）為3.775米、3.925米、4.025米及4.275米。
 3. 因住宅物業的較高樓層的結構牆的厚度遞減，較高樓層的內部面積，一般比較低層的內部面積稍大。
 4. 屬於複式A單位之空調機房及泳池濾水機房設於低層地下。請參考第49頁之樓面平面圖。
 5. 平面圖上藍色線顯示門的裝設位置。安裝於門與牆之間之室內裝置並未顯示於平面圖上。
 6. 有關平面圖中顯示之簡稱，請參閱第50頁之詞彙表。

FLOOR PLAN OF 1/F OF FLAT A (DUPLEX) 複式 A 單位 1 樓平面圖



NOTES: AS-BUILT PART PLANS OF FLAT A (DUPLEX)

The alteration works done to Flat A (duplex) are shown on the as-built part plans on p. 22 and p. 23. The alteration works have been done either by way of exempted works or minor works under the Buildings Ordinance:

- One of the sinks in Kitchen has been relocated.
- Non-structural partition walls have been added and the sink has been omitted in Bedroom 4 on G/F.
- The water closet and sink in Bathroom 6 on G/F have been repositioned.
- Non-structural partition walls have been added to the corridor between Bedroom 1 and Bedroom 2 on 1/F.
- Adjustments have been made to the non-structural partition walls between Bedroom 3 and Bedroom 4 on 1/F.

附註：複式 A 單位實際建造部份平面圖

複式 A 單位的改動工程顯示於第22頁及23頁的實際建造部份平面圖。改動工程均為建築物條例下的獲豁免的工程或小型工程：

- 廚房的其中一個洗滌盆已被搬遷。
- 地下睡房4內已加建非結構性間隔牆，另洗滌盆已被省略。
- 地下浴室6的坐廁及洗手盆的位置已被改動。
- 1樓睡房1及睡房2之間的走廊已加建非結構性間隔牆。
- 1樓睡房3及睡房4之間的非結構性間隔牆已被改動。

- The thickness of the floor slabs (excluding floor finish) of 1/F of Flat A (Duplex): 200mm, 275mm and 450mm.
- Floor-to-floor height (refers to the height between the top surface of the structural slab of a floor and the top surface of the structural slab of its immediate upper floor): 3.375m, 3.625m, 3.675m, 3.775m, 4.025m, 4.325m, 4.350m, 4.425m, 4.575m.
- The internal areas of the residential properties on the upper floors will generally be slightly larger than those on the lower floors because of the reducing thickness of the structural walls on the upper floors.
- The A/C Plant Room and Pool Filtration Plant Room of Flat A (Duplex) are located on LG/F. Please refer to the floor plan on p. 49.
- The lines in blue colour marked on the floor plan show those doors where they are installed. Interior fittings between doors and walls which are installed are not shown on the floor plan.
- Please refer to glossary on p. 50 for abbreviations shown in the floor plan.

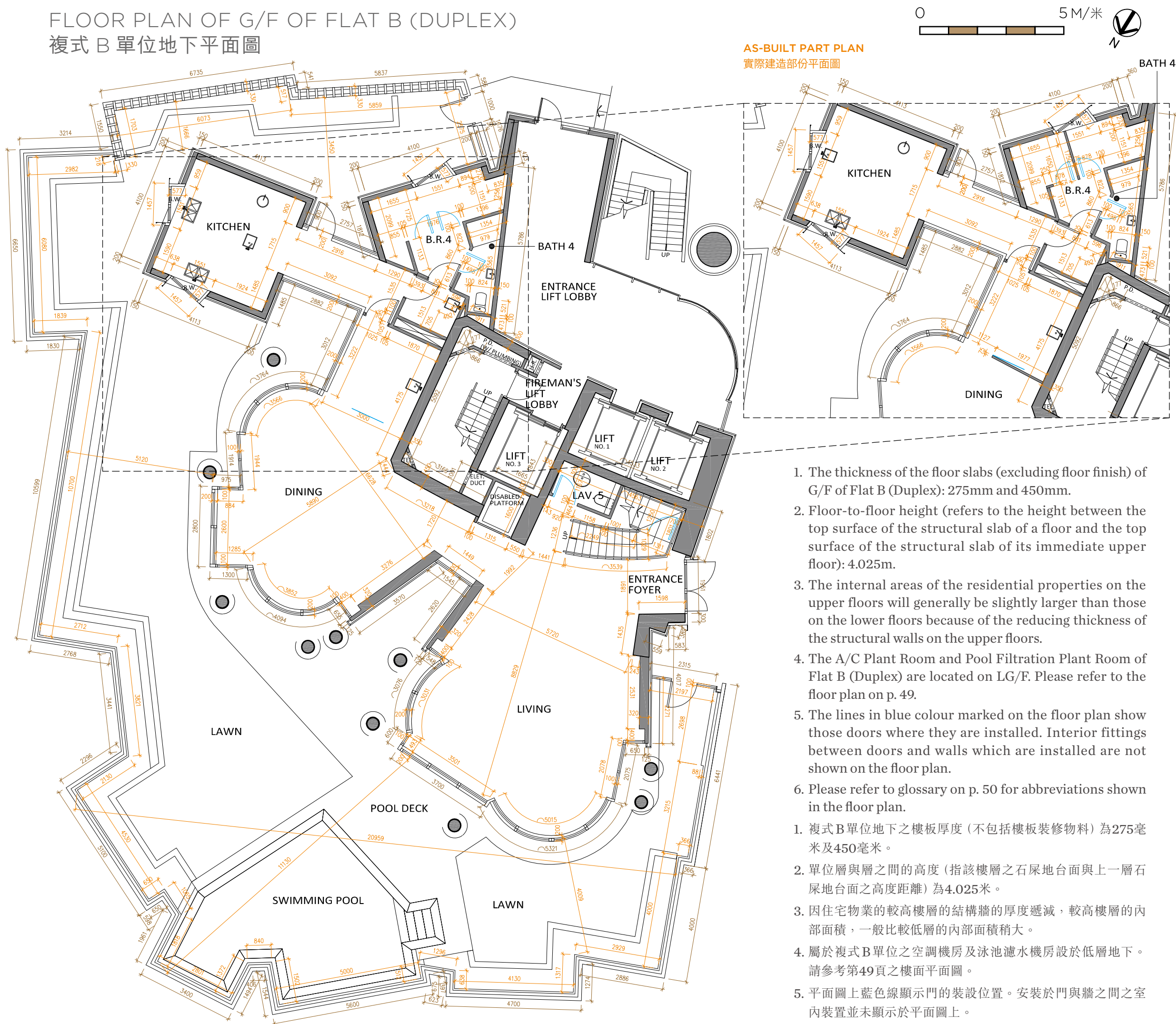
- 複式A單位1樓之樓板厚度（不包括樓板裝修物料）為200毫米、275毫米及450毫米。
- 單位層與層之間的高度（指該樓層之石屎地台面與上一層石屎地台面之高度距離）為3.375米、3.625米、3.675米、3.775米、4.025米、4.325米、4.350米、4.425米及4.575米。
- 因住宅物業的較高樓層的結構牆的厚度遞減，較高樓層的內部面積，一般比較低層的內部面積稍大。
- 屬於複式A單位之空調機房及泳池濾水機房設於低層地下。請參考第49頁之樓面平面圖。
- 平面圖上藍色線顯示門的裝設位置。安裝於門與牆之間之室內裝置並未顯示於平面圖上。
- 有關平面圖中顯示之簡稱，請參閱第50頁之詞彙表。

FLOOR PLANS OF RESIDENTIAL PROPERTIES IN THE DEVELOPMENT

發展項目的住宅物業的樓面平面圖

FLOOR PLAN OF G/F OF FLAT B (DUPLEX)

複式 B 單位地下平面圖



1. The thickness of the floor slabs (excluding floor finish) of G/F of Flat B (Duplex): 275mm and 450mm.
 2. Floor-to-floor height (refers to the height between the top surface of the structural slab of a floor and the top surface of the structural slab of its immediate upper floor): 4.025m.
 3. The internal areas of the residential properties on the upper floors will generally be slightly larger than those on the lower floors because of the reducing thickness of the structural walls on the upper floors.
 4. The A/C Plant Room and Pool Filtration Plant Room of Flat B (Duplex) are located on LG/F. Please refer to the floor plan on p. 49.
 5. The lines in blue colour marked on the floor plan show those doors where they are installed. Interior fittings between doors and walls which are installed are not shown on the floor plan.
 6. Please refer to glossary on p. 50 for abbreviations shown in the floor plan.
1. 複式 B 單位地下之樓板厚度 (不包括樓板裝修物料) 為 275 毫米及 450 毫米。
 2. 單位層與層之間的高度 (指該樓層之石屎地台面與上一層石屎地台面之高度距離) 為 4.025 米。
 3. 因住宅物業的較高樓層的結構牆的厚度遞減, 較高樓層的內部面積, 一般比較低層的內部面積稍大。
 4. 屬於複式 B 單位之空調機房及泳池濾水機房設於低層地下。請參考第 49 頁之樓面平面圖。
 5. 平面圖上藍色線顯示門的裝設位置。安裝於門與牆之間之室內裝置並未顯示於平面圖上。
 6. 有關平面圖中顯示之簡稱, 請參閱第 50 頁之詞彙表。

FLOOR PLAN OF 1/F OF FLAT B (DUPLEX)

複式 B 單位 1 樓平面圖

NOTES: AS-BUILT PART PLANS OF FLAT B (DUPLEX)

The alteration works done to Flat B (duplex) are shown on the as-built part plans on p. 24 and p. 25. The alteration works have been done either by way of exempted works or minor works under the Buildings Ordinance:

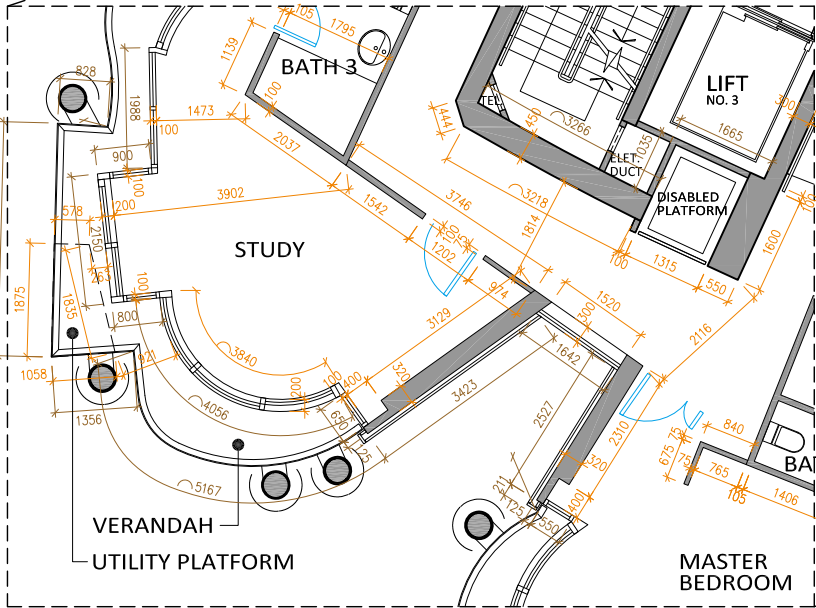
- a) One of the sinks in Kitchen has been omitted; another sink has been altered from a double sink to a single sink.
- b) Non-structural partition walls have been added and the sink has been omitted in Bedroom 4 on G/F.
- c) Non-structural partition wall has been added to Master Bedroom on 1/F.
- d) Non-structural partition wall has been added to the corridor between Bedroom 1 and Bedroom 2 on 1/F.
- e) Study room on 1/F is now enclosed with non-structural partition walls and a door opening.

附註：複式 B 單位實際建造部份平面圖

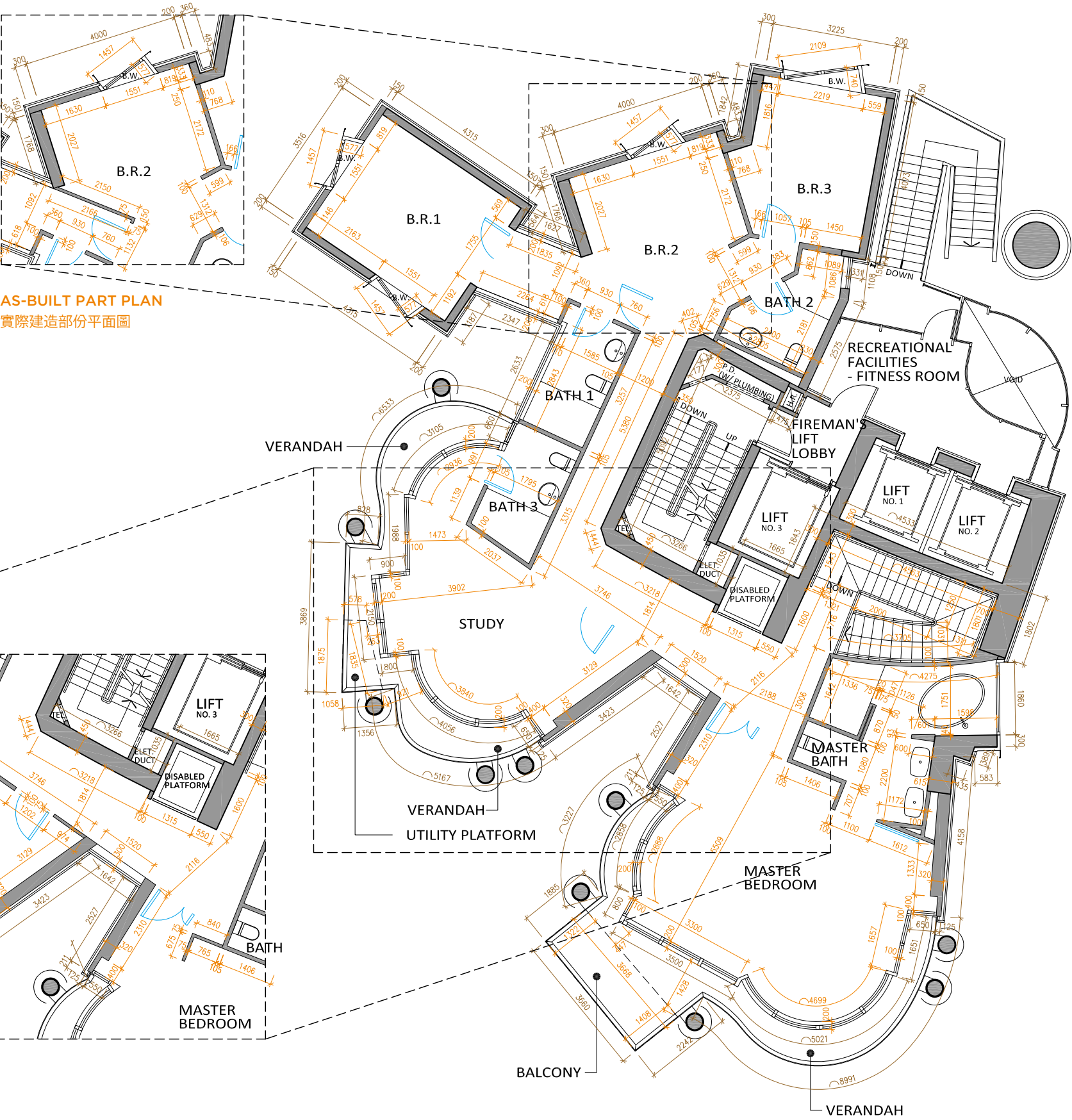
複式 B 單位的改動工程顯示於第24頁及25頁的實際建造部份平面圖。改動工程均為建築物條例下的獲豁免的工程或小型工程：

- a) 廚房的其中一個洗滌盆已被省略；另一洗滌盆從雙盆改動成單盆。
- b) 地下睡房4內已加建非結構性間隔牆，另洗滌盆已被省略。
- c) 1樓主人睡房內已加建非結構性間隔牆。
- d) 1樓睡房1及睡房2之間的走廊已加建非結構性間隔牆。
- e) 1樓書房已被非結構性間隔牆圍封，並設有門口。

AS-BUILT PART PLAN 實際建造部份 平面圖



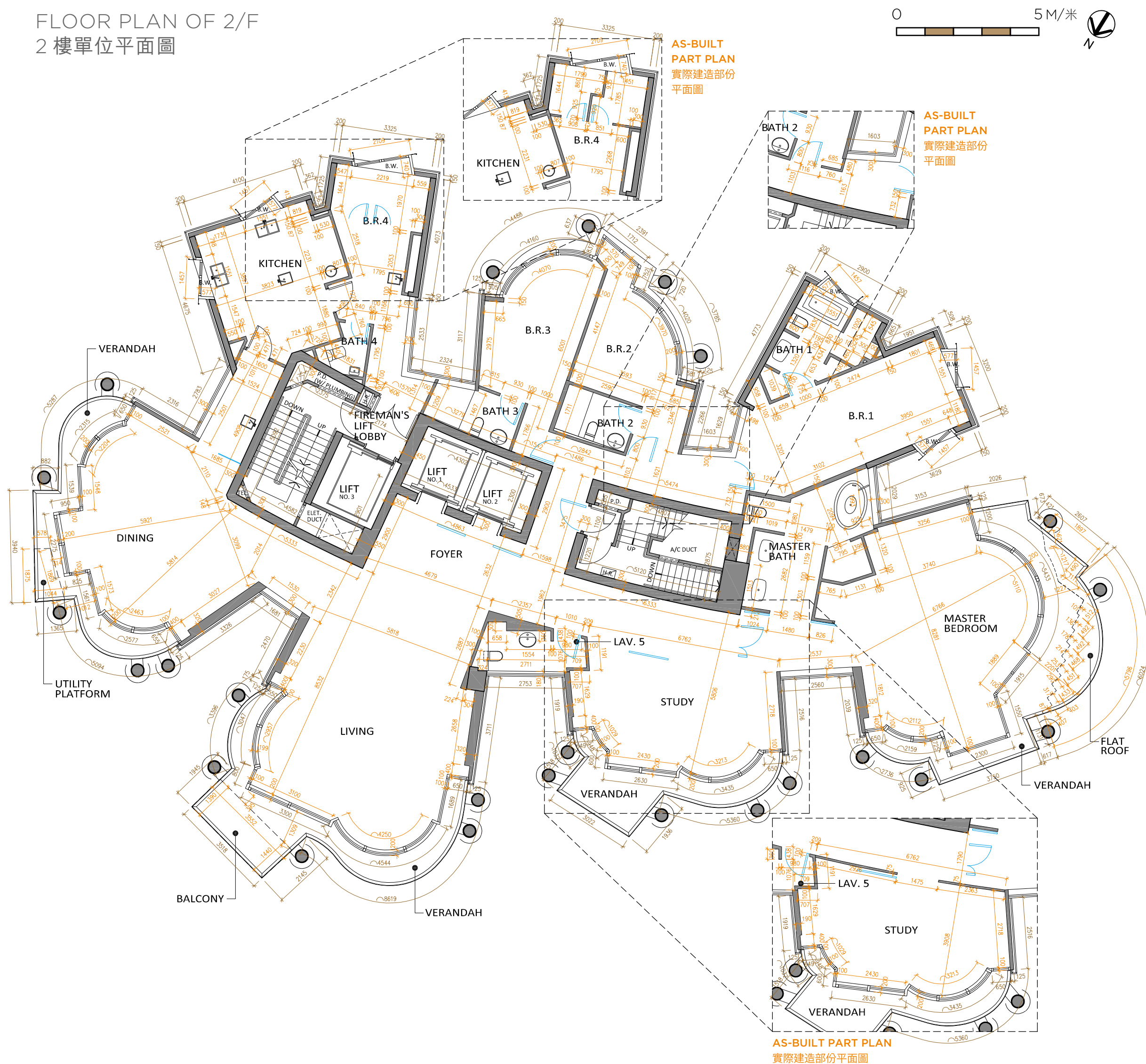
AS-BUILT PART PLAN 實際建造部份平面圖



1. The thickness of the floor slabs (excluding floor finish) of 1/F of Flat B (Duplex): 150mm, 200mm, 275mm and 450mm.
2. Floor-to-floor height (refers to the height between the top surface of the structural slab of a floor and the top surface of the structural slab of its immediate upper floor): 3.700m, 3.825m, 3.875m, 4.025m and 4.125m.
3. The internal areas of the residential properties on the upper floors will generally be slightly larger than those on the lower floors because of the reducing thickness of the structural walls on the upper floors.
4. The A/C Plant Room and Pool Filtration Plant Room of Flat B (Duplex) are located on LG/F. Please refer to the floor plan on p. 49.
5. The lines in blue colour marked on the floor plan show those doors where they are installed. Interior fittings between doors and walls which are installed are not shown on the floor plan.
6. Please refer to glossary on p. 50 for abbreviations shown in the floor plan.

1. 複式 B 單位1樓之樓板厚度（不包括樓板裝修物料）為150毫米、200毫米、275毫米及450毫米。
2. 單位層與層之間的高度（指該樓層之石屎地台面與上一層石屎地台面之高度距離）為3.700米、3.825米、3.875米、4.025米及4.125米。
3. 因住宅物業的較高樓層的結構牆的厚度遞減，較高樓層的內部面積，一般比較低層的內部面積稍大。
4. 屬於複式 B 單位之空調機房及泳池濾水機房設於低層地下。請參考第49頁之樓面平面圖。
5. 平面圖上藍色線顯示門的裝設位置。安裝於門與牆之間之室內裝置並未顯示於平面圖上。
6. 有關平面圖中顯示之簡稱，請參閱第50頁之詞彙表。

FLOOR PLANS OF RESIDENTIAL PROPERTIES IN THE DEVELOPMENT
發展項目的住宅物業的樓面平面圖



-
1. The thickness of the floor slabs (excluding floor finish) of this residential floor: 275mm and 450mm.
 2. Floor-to-floor height (refers to the height between the top surface of the structural slab of a floor and the top surface of the structural slab of its immediate upper floor): 3.675m, 3.725m, 3.775m, 3.825m, 3.875m, 4.025m, 4.175m, 4.225m, 4.275m, 4.325m and 4.375m.
 3. The internal areas of the residential properties on the upper floors will generally be slightly larger than those on the lower floors because of the reducing thickness of the structural walls on the upper floors.
 4. The A/C Plant Room of 2/F is located on LG/F. Please refer to the floor plan on p. 49.
 5. The lines in blue colour marked on the floor plan show those doors where they are installed. Interior fittings between doors and walls which are installed are not shown on the floor plan.
 6. The rectangular area which is enclosed by walls in Bedroom 4 on this floor plan houses gas water heaters serving this residential unit on 2/F. For details, please refer to “Mechanical and Electrical Provision Plan” and “Schedule of Mechanical & Electrical Provisions”.
 7. Please refer to glossary on p. 50 for abbreviations shown in the floor plan.

NOTES: AS-BUILT PART PLANS OF 2/F

The alteration works done to the Unit of 2/F are shown on the as-built part plans on p. 26. The alteration works have been done either by way of exempted works or minor works under the Buildings Ordinance:

- a) One of the sinks in Kitchen has been omitted.
- b) Non-structural partition walls have been added and the sink has been omitted in Bedroom 4.
- c) Non-structural partition wall has been added to Bedroom 2.
- d) Study room is now enclosed with non-structural partition walls and a door opening.

1. 住宅單位之樓板厚度（不包括樓板裝修物料）為**275毫米**及**450毫米**。
2. 單位層與層之間的高度（指該樓層之石屎地台面與上一層石屎地台面之高度距離）為**3.675米**、**3.725米**、**3.775米**、**3.825米**、**3.875米**、**4.025米**、**4.175米**、**4.225米**、**4.275米**、**4.325米**及**4.375米**。
3. 因住宅物業的較高樓層的結構牆的厚度遞減，較高樓層的內部面積，一般比較低層的內部面積稍大。
4. 屬於**2樓**單位之空調機房設於低層地下。請參考第**49**頁之樓面平面圖。
5. 平面圖上藍色線顯示門的裝設位置。安裝於門與牆之間之室內裝置並未顯示於平面圖上。
6. 平面圖上所顯示於睡房**4**內，被牆所圍封的長方形範圍用作放置煤氣熱水爐，以供給**2樓**住宅單位使用。有關詳細資料，請參考“機電裝置平面圖”及“機電裝置數量說明表”。
7. 有關平面圖中顯示之簡稱，請參閱第**50**頁之詞彙表。

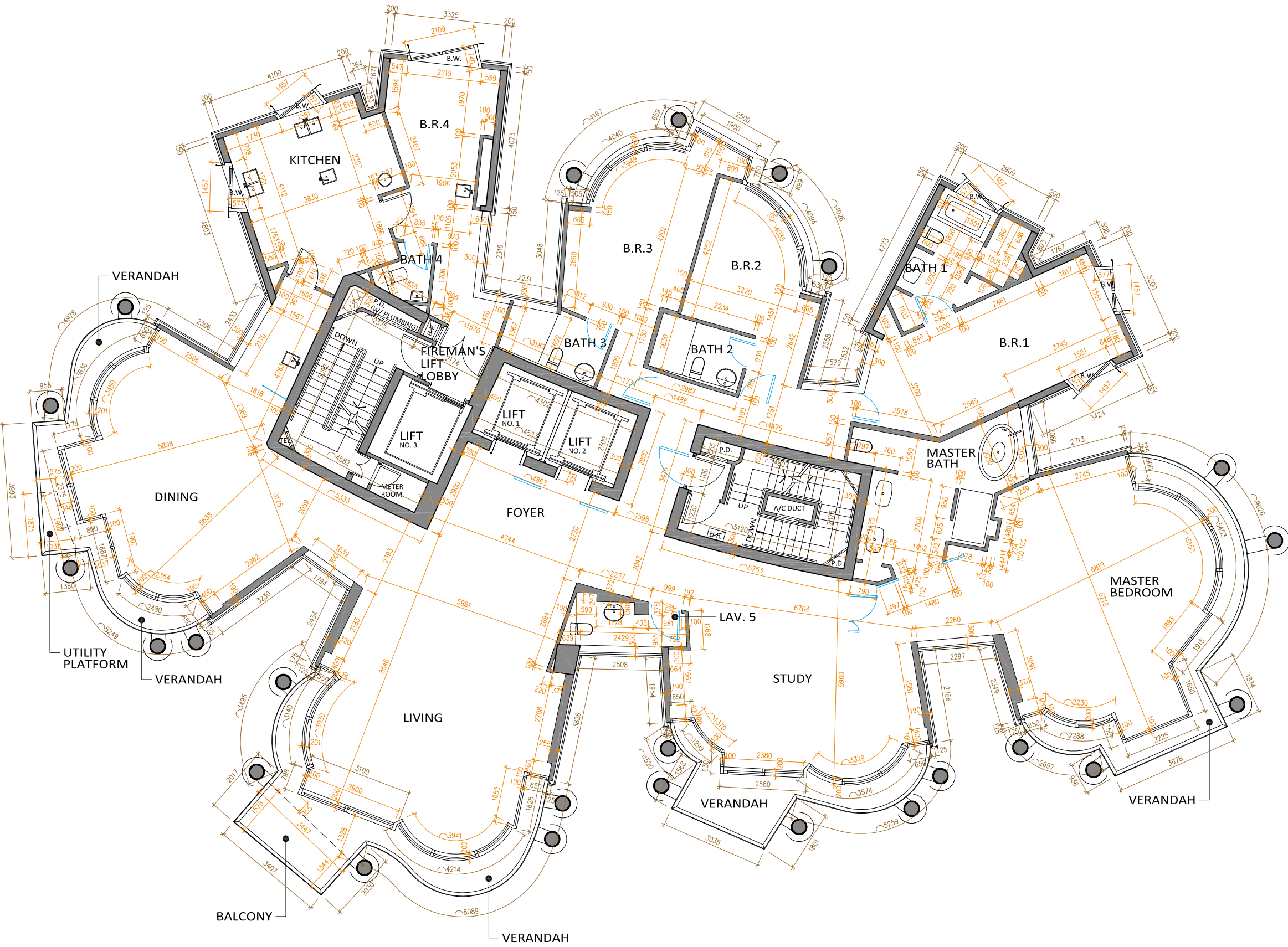
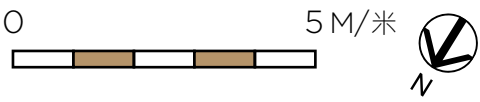
附註：2樓單位實際建造部份平面圖

2樓單位的改動工程顯示於第**26**頁的實際建造部份平面圖。改動工程均為建築物條例下的獲豁免的工程或小型工程：

- a) 廚房的其中一個洗滌盆已被省略。
- b) 睡房**4**內已加建非結構性間隔牆，另洗滌盆已被省略。
- c) 睡房**2**內已加建非結構性間隔牆。
- d) 書房已被非結構性間隔牆圍封，並設有門口。

FLOOR PLANS OF RESIDENTIAL PROPERTIES IN THE DEVELOPMENT
發展項目的住宅物業的樓面平面圖

FLOOR PLAN OF 3/F
3 樓單位平面圖



-
1. The thickness of the floor slabs (excluding floor finish) of this residential floor: 275mm and 450mm.
 2. Floor-to-floor height (refers to the height between the top surface of the structural slab of a floor and the top surface of the structural slab of its immediate upper floor): 3.675m, 3.725m, 3.775m, 3.825m, 3.875m, 4.025m, 4.175m, 4.225m, 4.275m, 4.325m and 4.375m.
 3. The internal areas of the residential properties on the upper floors will generally be slightly larger than those on the lower floors because of the reducing thickness of the structural walls on the upper floors.
 4. The A/C Plant Room of 3/F is located on LG/F. Please refer to the floor plan on p. 49.
 5. The lines in blue colour marked on the floor plan show those doors where they are installed. Interior fittings between doors and walls which are installed are not shown on the floor plan.
 6. The rectangular area which is enclosed by walls in Bedroom 4 on this floor plan houses gas water heaters serving this residential unit on 3/F. For details, please refer to “Mechanical and Electrical Provision Plan” and “Schedule of Mechanical & Electrical Provisions”.
 7. Please refer to glossary on p. 50 for abbreviations shown in the floor plan.

1. 住宅單位之樓板厚度（不包括樓板裝修物料）為**275毫米**及**450毫米**。
2. 單位層與層之間的高度（指該樓層之石屎地台面與上一層石屎地台面之高度距離）為**3.675米**、**3.725米**、**3.775米**、**3.825米**、**3.875米**、**4.025米**、**4.175米**、**4.225米**、**4.275米**、**4.325米**及**4.375米**。
3. 因住宅物業的較高樓層的結構牆的厚度遞減，較高樓層的內部面積，一般比較低層的內部面積稍大。
4. 屬於**3樓**單位之空調機房設於低層地下。請參考第**49**頁之樓面平面圖。
5. 平面圖上藍色線顯示門的裝設位置。安裝於門與牆之間之室內裝置並未顯示於平面圖上。
6. 平面圖上所顯示於睡房**4**內，被牆所圍封的長方形範圍用作放置煤氣熱水爐，以供給**3樓**住宅單位使用。有關詳細資料，請參考“機電裝置平面圖”及“機電裝置數量說明表”。
7. 有關平面圖中顯示之簡稱，請參閱第**50**頁之詞彙表。

FLOOR PLANS OF RESIDENTIAL PROPERTIES IN THE DEVELOPMENT
發展項目的住宅物業的樓面平面圖



-
1. The thickness of the floor slabs (excluding floor finish) of this residential floor: 275mm and 450mm.
 2. Floor-to-floor height (refers to the height between the top surface of the structural slab of a floor and the top surface of the structural slab of its immediate upper floor): 3.675m, 3.725m, 3.775m, 3.825m, 3.875m, 4.025m, 4.175m, 4.225m, 4.275m, 4.325m and 4.375m.
 3. The internal areas of the residential properties on the upper floors will generally be slightly larger than those on the lower floors because of the reducing thickness of the structural walls on the upper floors.
 4. The A/C Plant Room of 5/F is located on LG/F. Please refer to the floor plan on p. 49.
 5. The lines in blue colour marked on the floor plan show those doors where they are installed. Interior fittings between doors and walls which are installed are not shown on the floor plan.
 6. The rectangular area which is enclosed by walls in Bedroom 4 on this floor plan houses gas water heaters serving this residential unit on 5/F. For details, please refer to “Mechanical and Electrical Provision Plan” and “Schedule of Mechanical & Electrical Provisions”.
 7. Please refer to glossary on p. 50 for abbreviations shown in the floor plan.

NOTES: AS-BUILT PART PLANS OF 5/F

The alteration works done to the Unit of 5/F are shown on the as-built part plans on p. 30. The alteration works have been done either by way of exempted works or minor works under the Buildings Ordinance :

- a) One of the sinks in Kitchen has been omitted.
- b) Non-structural partition walls have been added and the sink has been omitted in Bedroom 4.
- c) Study room is now enclosed with non-structural partition walls and a door opening.

1. 住宅單位之樓板厚度（不包括樓板裝修物料）為275毫米及450毫米。
2. 單位層與層之間的高度（指該樓層之石屎地台面與上一層石屎地台面之高度距離）為3.675米、3.725米、3.775米、3.825米、3.875米、4.025米、4.175米、4.225米、4.275米、4.325米及4.375米。
3. 因住宅物業的較高樓層的結構牆的厚度遞減，較高樓層的內部面積，一般比較低層的內部面積稍大。
4. 屬於5樓單位之空調機房設於低層地下。請參考第49頁之樓面平面圖。
5. 平面圖上藍色線顯示門的裝設位置。安裝於門與牆之間之室內裝置並未顯示於平面圖上。
6. 平面圖上所顯示於睡房4內，被牆所圍封的長方形範圍用作放置煤氣熱水爐，以供給5樓住宅單位使用。有關詳細資料，請參考“機電裝置平面圖”及“機電裝置數量說明表”。
7. 有關平面圖中顯示之簡稱，請參閱第50頁之詞彙表。

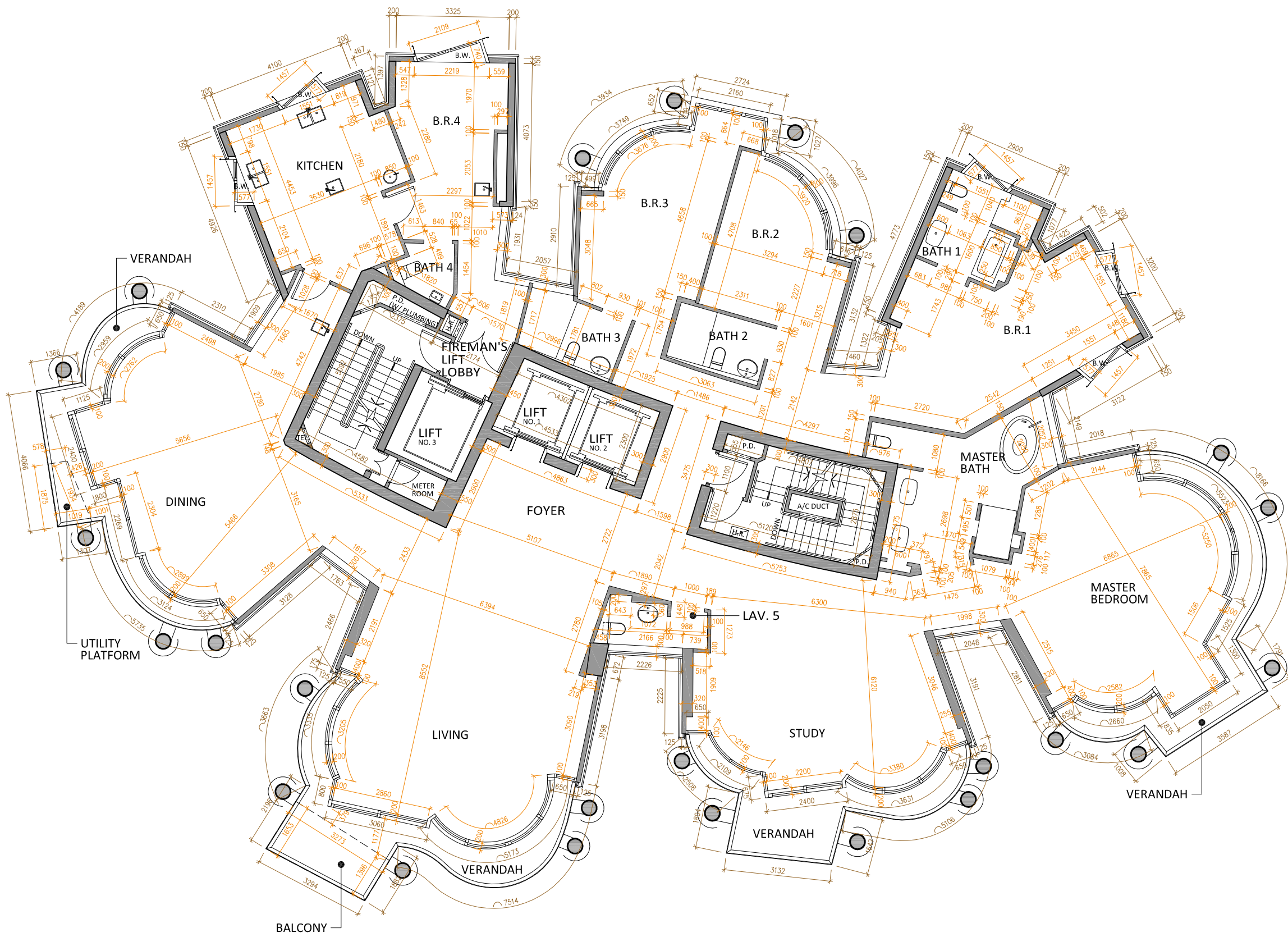
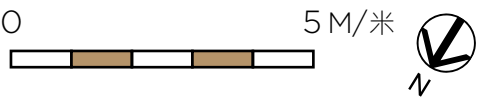
附註：5樓單位實際建造部份平面圖

5樓單位的改動工程顯示於第30頁的實際建造部份平面圖。改動工程均為建築物條例下的獲豁免的工程或小型工程：

- a) 廚房的其中一個洗滌盆已被省略。
- b) 睡房4內已加建非結構性間隔牆，另洗滌盆已被省略。
- c) 書房已被非結構性間隔牆圍封，並設有門口。

FLOOR PLANS OF RESIDENTIAL PROPERTIES IN THE DEVELOPMENT
發展項目的住宅物業的樓面平面圖

FLOOR PLAN OF 6/F
6 樓單位平面圖

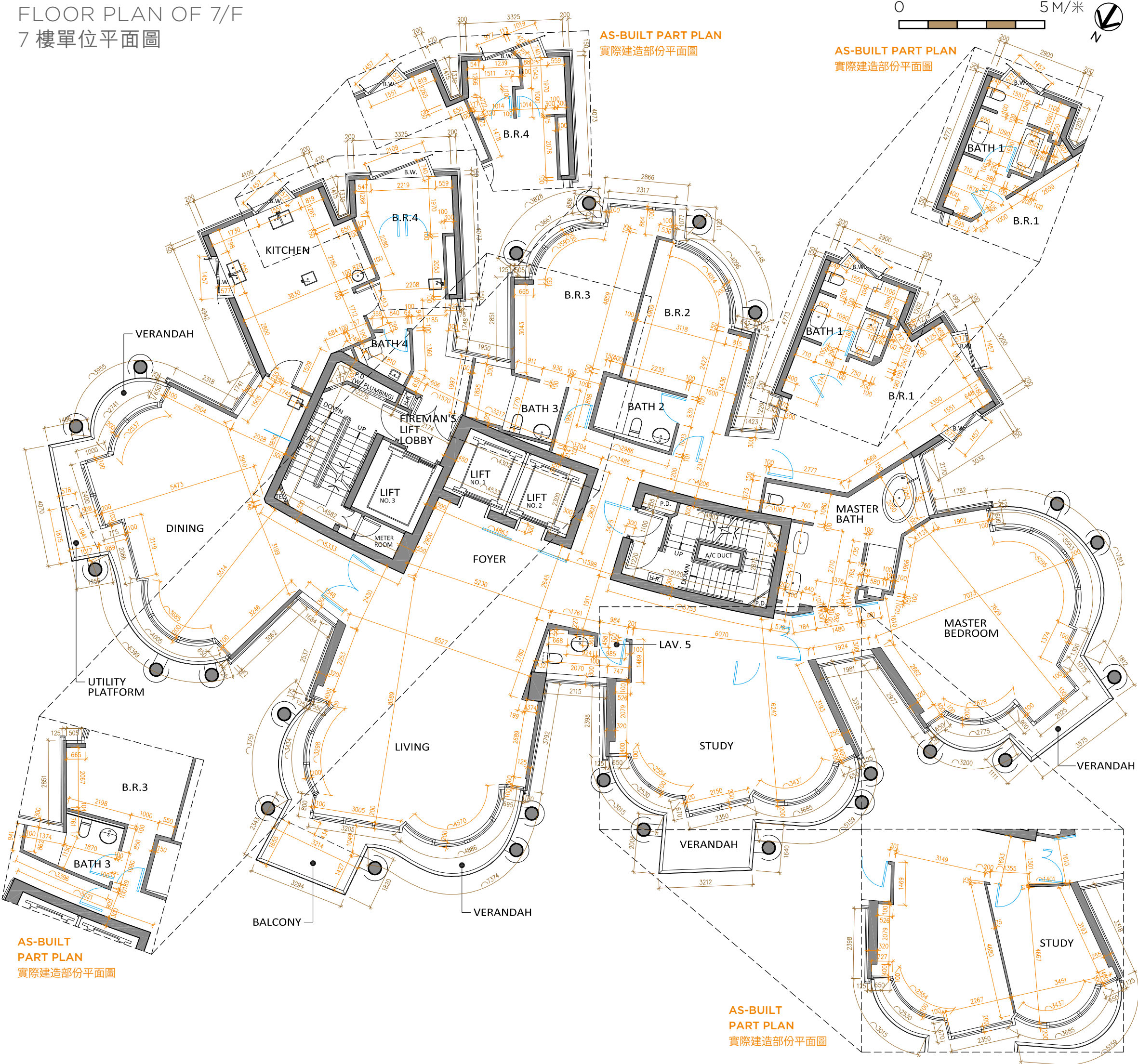


-
1. The thickness of the floor slabs (excluding floor finish) of this residential floor: 275mm and 450mm.
 2. Floor-to-floor height (refers to the height between the top surface of the structural slab of a floor and the top surface of the structural slab of its immediate upper floor): 3.675m, 3.725m, 3.775m, 3.825m, 3.875m, 4.025m, 4.175m, 4.225m, 4.275m, 4.325m and 4.375m.
 3. The internal areas of the residential properties on the upper floors will generally be slightly larger than those on the lower floors because of the reducing thickness of the structural walls on the upper floors.
 4. The A/C Plant Room of 6/F is located on LG/F. Please refer to the floor plan on p. 49.
 5. The rectangular area which is enclosed by walls in Bedroom 4 on this floor plan houses gas water heaters serving this residential unit on 6/F. For details, please refer to “Mechanical and Electrical Provision Plan” and “Schedule of Mechanical & Electrical Provisions”.
 6. Please refer to glossary on p. 50 for abbreviations shown in the floor plan.

1. 住宅單位之樓板厚度（不包括樓板裝修物料）為**275毫米**及**450毫米**。
2. 單位層與層之間的高度（指該樓層之石屎地台面與上一層石屎地台面之高度距離）為**3.675米**、**3.725米**、**3.775米**、**3.825米**、**3.875米**、**4.025米**、**4.175米**、**4.225米**、**4.275米**、**4.325米**及**4.375米**。
3. 因住宅物業的較高樓層的結構牆的厚度遞減，較高樓層的內部面積，一般比較低層的內部面積稍大。
4. 屬於**6樓**單位之空調機房設於低層地下。請參考第**49**頁之樓面平面圖。
5. 平面圖上所顯示於睡房**4**內，被牆所圍封的長方形範圍用作放置煤氣熱水爐，以供給**6樓**住宅單位使用。有關詳細資料，請參考“機電裝置平面圖”及“機電裝置數量說明表”。
6. 有關平面圖中顯示之簡稱，請參閱第**50**頁之詞彙表。

FLOOR PLANS OF RESIDENTIAL PROPERTIES IN THE DEVELOPMENT
發展項目的住宅物業的樓面平面圖

FLOOR PLAN OF 7/F
7 樓單位平面圖



-
1. The thickness of the floor slabs (excluding floor finish) of this residential floor: 275mm and 300mm.
 2. Floor-to-floor height (refers to the height between the top surface of the structural slab of a floor and the top surface of the structural slab of its immediate upper floor): 3.675m, 3.725m, 3.775m, 3.825m, 3.875m, 4.025m, 4.175m, 4.225m, 4.275m, 4.325m and 4.375m.
 3. The internal areas of the residential properties on the upper floors will generally be slightly larger than those on the lower floors because of the reducing thickness of the structural walls on the upper floors.
 4. The A/C Plant Platform of 7/F is located on Roof. Please refer to the floor plan on p. 47.
 5. The lines in blue colour marked on the floor plan show those doors where they are installed. Interior fittings between doors and walls which are installed are not shown on the floor plan.
 6. The rectangular area which is enclosed by walls in Bedroom 4 on this floor plan houses gas water heaters serving this residential unit on 7/F. For details, please refer to “Mechanical and Electrical Provision Plan” and “Schedule of Mechanical & Electrical Provisions”.
 7. Please refer to glossary on p. 50 for abbreviations shown in the floor plan.

NOTES: AS-BUILT PART PLANS OF 7/F

The alteration works done to the Unit of 7/F are shown on the as-built part plans on p. 34. The alteration works have been done either by way of exempted works or minor works under the Buildings Ordinance:

- a) One of the sinks in Kitchen has been omitted.
- b) Non-structural partition walls have been added and the sink has been omitted in Bedroom 4.
- c) Bathroom 3 has been relocated to extend the corridor passage from Bedroom 3 to Bedroom 4.
- d) Non-structural partition walls have been added to Bedroom 1.
- e) Study room is now enclosed with non-structural partition walls and a door opening.

1. 住宅單位之樓板厚度（不包括樓板裝修物料）為275毫米及300毫米。
2. 單位層與層之間的高度（指該樓層之石屎地台面與上一層石屎地台面之高度距離）為3.675米、3.725米、3.775米、3.825米、3.875米、4.025米、4.175米、4.225米、4.275米、4.325米及4.375米。
3. 因住宅物業的較高樓層的結構牆的厚度遞減，較高樓層的內部面積，一般比較低層的內部面積稍大。
4. 屬於7樓單位之空調機平台設於天台。請參考第47頁之樓面平面圖。
5. 平面圖上藍色線顯示門的裝設位置。安裝於門與牆之間之室內裝置並未顯示於平面圖上。
6. 平面圖上所顯示於睡房4內，被牆所圍封的長方形範圍用作放置煤氣熱水爐，以供給7樓住宅單位使用。有關詳細資料，請參考“機電裝置平面圖”及“機電裝置數量說明表”。
7. 有關平面圖中顯示之簡稱，請參閱第50頁之詞彙表。

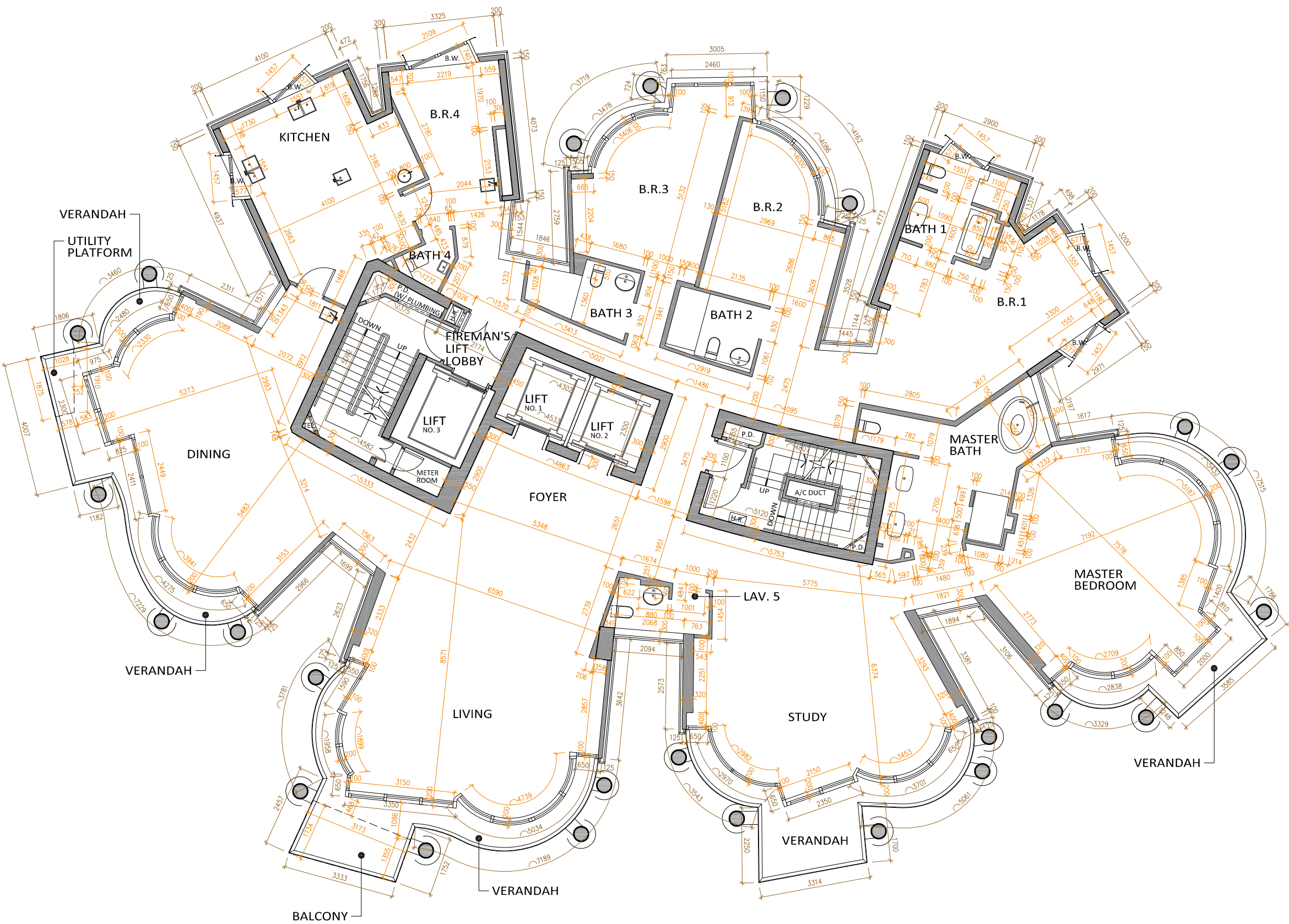
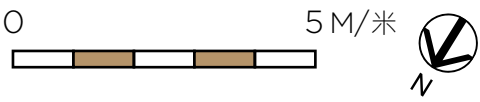
附註：7樓單位實際建造部份平面圖

7樓單位的改動工程顯示於第34頁的實際建造部份平面圖。改動工程均為建築物條例下的獲豁免的工程或小型工程：

- a) 廚房的其中一個洗滌盆已被省略。
- b) 睡房4內已加建非結構性間隔牆，另洗滌盆已被省略。
- c) 浴室3已被遷移，延長了從睡房3至睡房4的走廊通道。
- d) 睡房1內已加建非結構性間隔牆。
- e) 書房已被非結構性間隔牆圍封，並設有門口。

FLOOR PLANS OF RESIDENTIAL PROPERTIES IN THE DEVELOPMENT
發展項目的住宅物業的樓面平面圖

FLOOR PLAN OF 8/F
8 樓單位平面圖

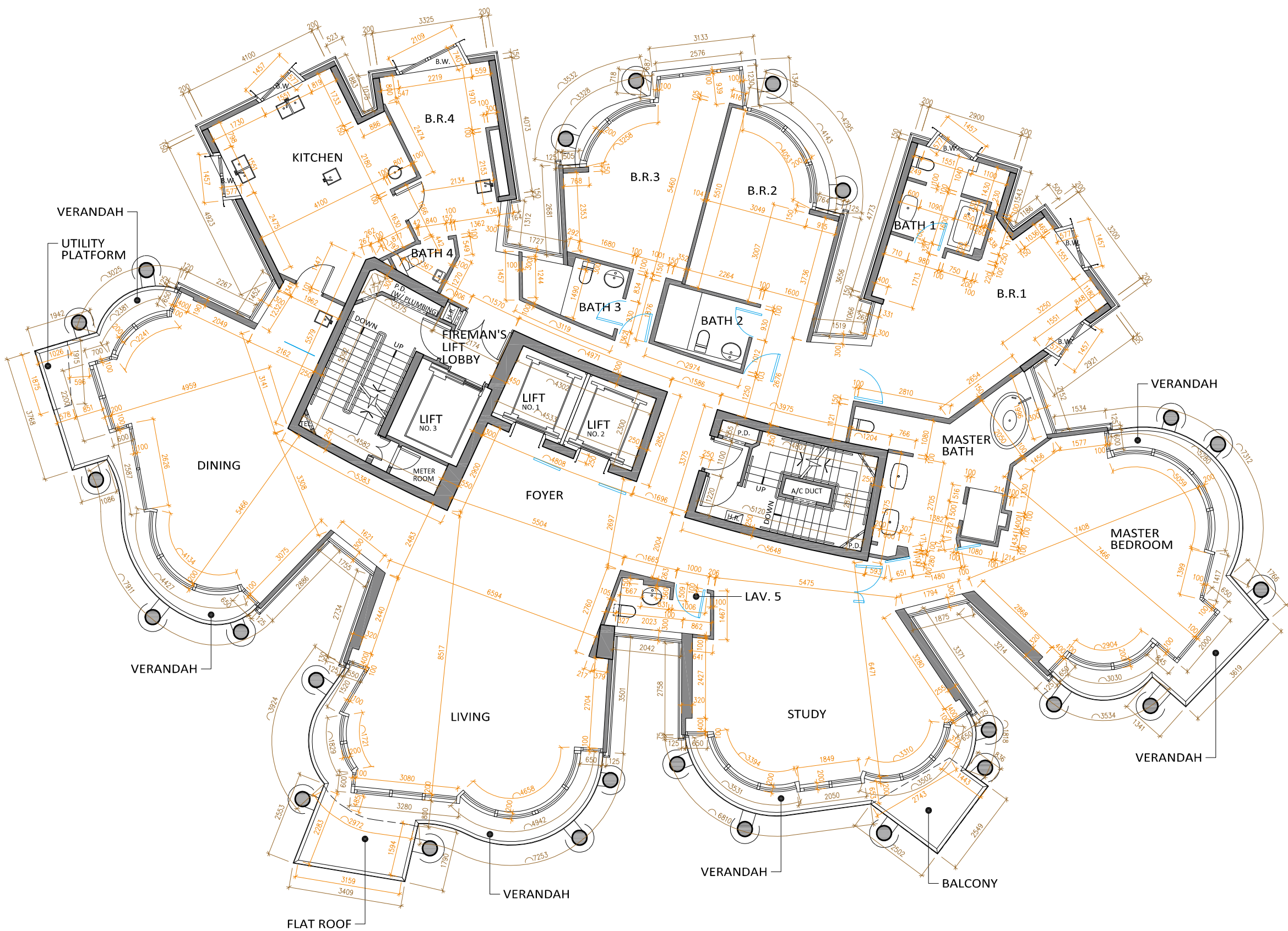
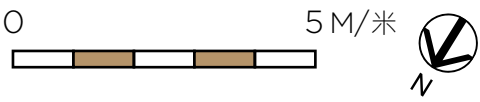


-
1. The thickness of the floor slabs (excluding floor finish) of this residential floor: 275mm and 300mm.
 2. Floor-to-floor height (refers to the height between the top surface of the structural slab of a floor and the top surface of the structural slab of its immediate upper floor): 3.675m, 3.725m, 3.775m, 3.825m, 3.875m, 4.025m, 4.175m, 4.225m, 4.275m, 4.325m and 4.375m.
 3. The internal areas of the residential properties on the upper floors will generally be slightly larger than those on the lower floors because of the reducing thickness of the structural walls on the upper floors.
 4. The A/C Plant Platform of 8/F is located on Roof. Please refer to the floor plan on p. 47.
 5. The rectangular area which is enclosed by walls in Bedroom 4 on this floor plan houses gas water heaters serving this residential unit on 8/F. For details, please refer to “Mechanical and Electrical Provision Plan” and “Schedule of Mechanical & Electrical Provisions”.
 6. Please refer to glossary on p. 50 for abbreviations shown in the floor plan.

1. 住宅單位之樓板厚度（不包括樓板裝修物料）為275毫米及300毫米。
2. 單位層與層之間的高度（指該樓層之石屎地台面與上一層石屎地台面之高度距離）為3.675米、3.725米、3.775米、3.825米、3.875米、4.025米、4.175米、4.225米、4.275米、4.325米及4.375米。
3. 因住宅物業的較高樓層的結構牆的厚度遞減，較高樓層的內部面積，一般比較低層的內部面積稍大。
4. 屬於8樓單位之空調機平台設於天台。請參考第47頁之樓面平面圖。
5. 平面圖上所顯示於睡房4內，被牆所圍封的長方形範圍用作放置煤氣熱水爐，以供給8樓住宅單位使用。有關詳細資料，請參考“機電裝置平面圖”及“機電裝置數量說明表”。
6. 有關平面圖中顯示之簡稱，請參閱第50頁之詞彙表。

FLOOR PLANS OF RESIDENTIAL PROPERTIES IN THE DEVELOPMENT
發展項目的住宅物業的樓面平面圖

FLOOR PLAN OF 9/F
9 樓單位平面圖

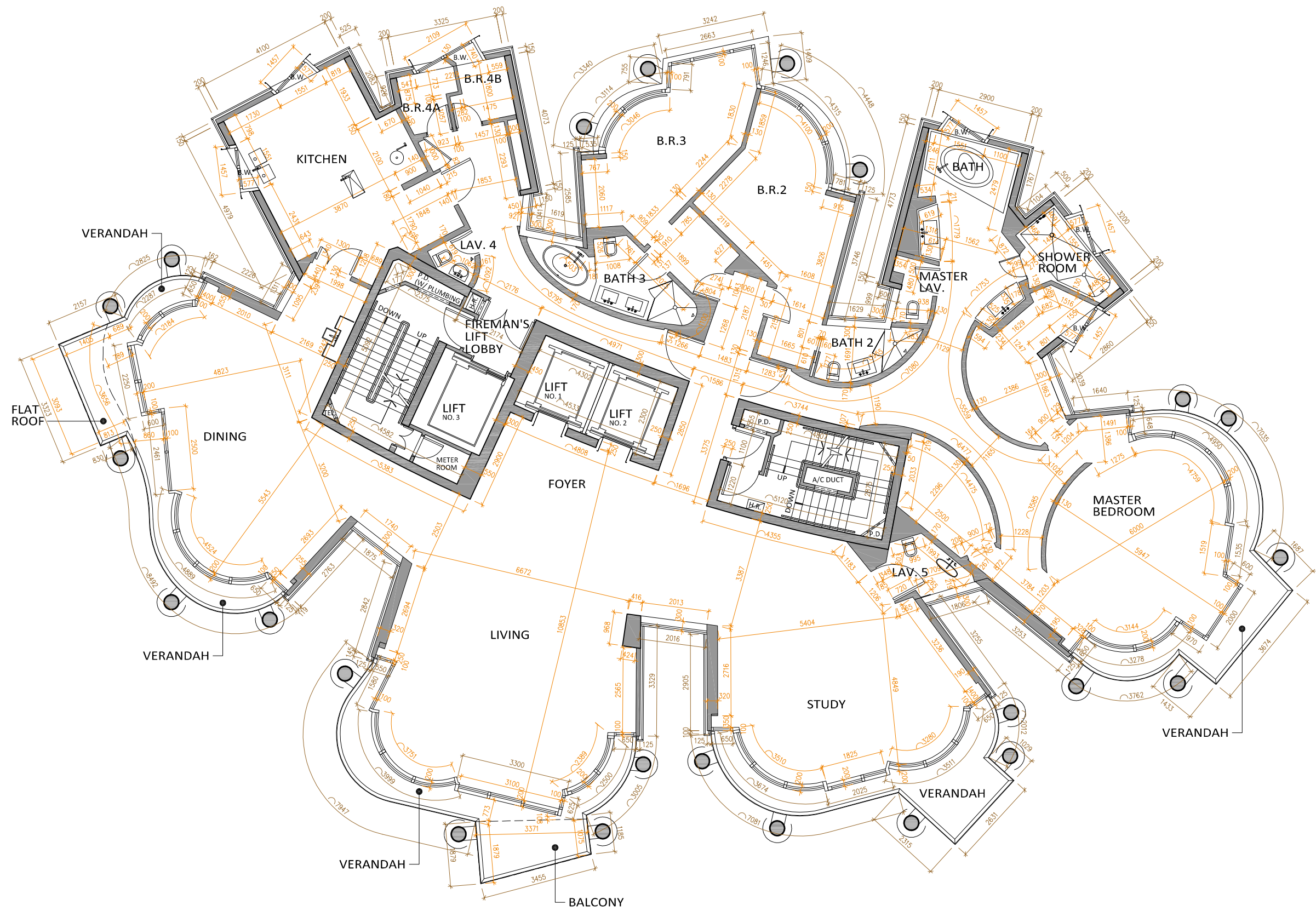
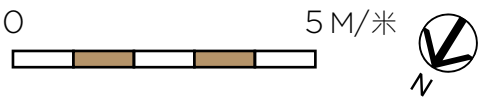


-
1. The thickness of the floor slabs (excluding floor finish) of this residential floor: 275mm and 300mm.
 2. Floor-to-floor height (refers to the height between the top surface of the structural slab of a floor and the top surface of the structural slab of its immediate upper floor): 3.675m, 3.725m, 3.775m, 3.825m, 3.875m, 4.025m, 4.175m, 4.225m, 4.275m, 4.325m and 4.375m.
 3. The internal areas of the residential properties on the upper floors will generally be slightly larger than those on the lower floors because of the reducing thickness of the structural walls on the upper floors.
 4. The A/C Plant Platform of 9/F is located on Upper Roof. Please refer to the floor plan on p. 48.
 5. The lines in blue colour marked on the floor plan show those doors where they are installed. Interior fittings between doors and walls which are installed are not shown on the floor plan.
 6. The rectangular area which is enclosed by walls in Bedroom 4 on this floor plan houses gas water heaters serving this residential unit on 9/F. For details, please refer to “Mechanical and Electrical Provision Plan” and “Schedule of Mechanical & Electrical Provisions”.
 7. Please refer to glossary on p. 50 for abbreviations shown in the floor plan.

1. 住宅單位之樓板厚度（不包括樓板裝修物料）為275毫米及300毫米。
2. 單位層與層之間的高度（指該樓層之石屎地台面與上一層石屎地台面之高度距離）為3.675米、3.725米、3.775米、3.825米、3.875米、4.025米、4.175米、4.225米、4.275米、4.325米及4.375米。
3. 因住宅物業的較高樓層的結構牆的厚度遞減，較高樓層的內部面積，一般比較低層的內部面積稍大。
4. 屬於9樓單位之空調機平台設於上層天台。請參考第48頁之樓面平面圖。
5. 平面圖上藍色線顯示門的裝設位置。安裝於門與牆之間之室內裝置並未顯示於平面圖上。
6. 平面圖上所顯示於睡房4內，被牆所圍封的長方形範圍用作放置煤氣熱水爐，以供給9樓住宅單位使用。有關詳細資料，請參考“機電裝置平面圖”及“機電裝置數量說明表”。
7. 有關平面圖中顯示之簡稱，請參閱第50頁之詞彙表。

FLOOR PLANS OF RESIDENTIAL PROPERTIES IN THE DEVELOPMENT
發展項目的住宅物業的樓面平面圖

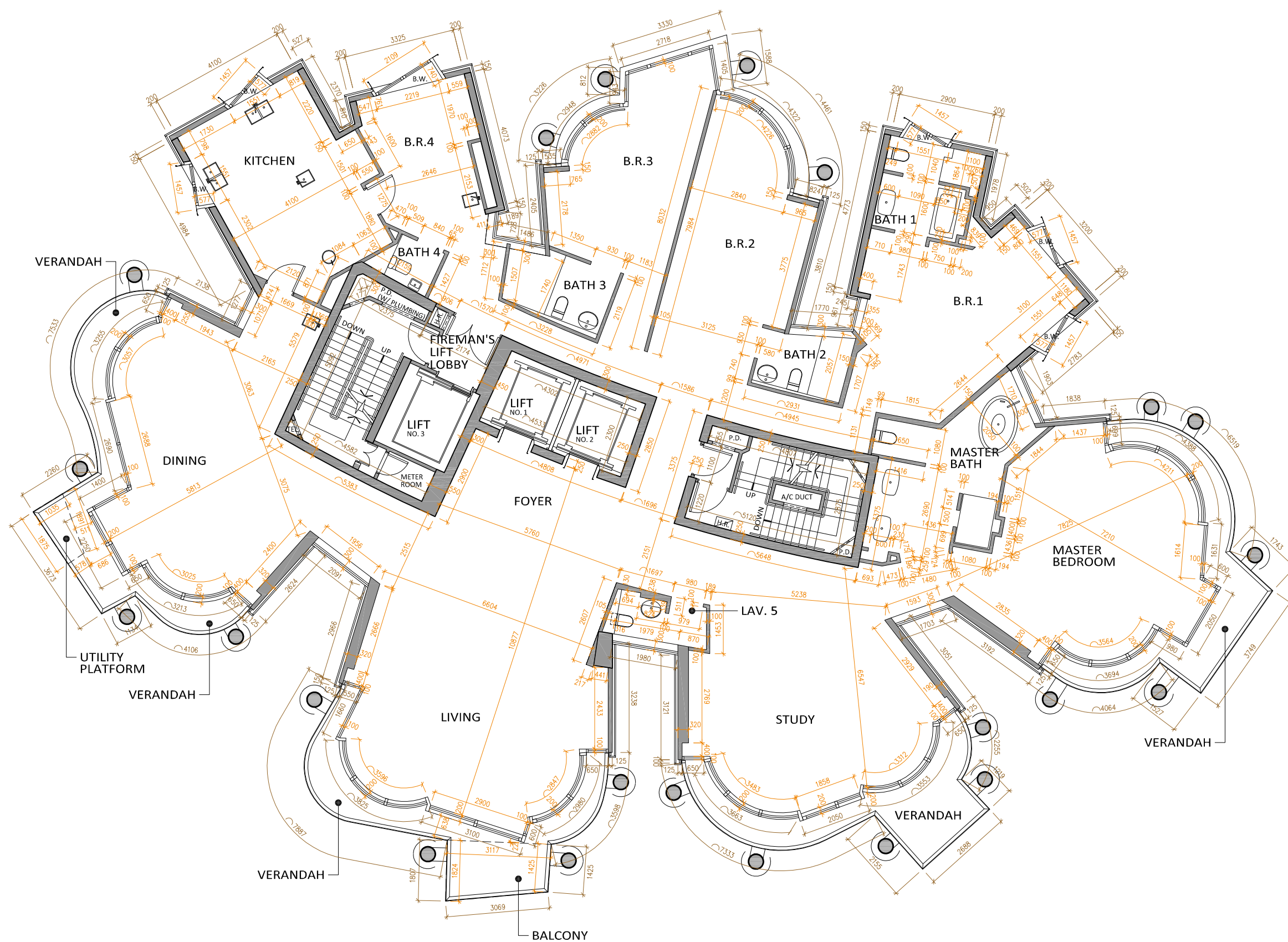
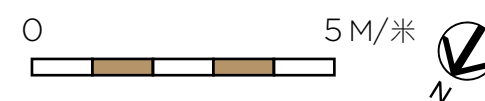
FLOOR PLAN OF 10/F
10 樓單位平面圖



-
1. The thickness of the floor slabs (excluding floor finish) of this residential floor: 275mm and 300mm.
 2. Floor-to-floor height (refers to the height between the top surface of the structural slab of a floor and the top surface of the structural slab of its immediate upper floor): 3.675m, 3.725m, 3.775m, 3.825m, 3.875m, 4.025m, 4.175m, 4.225m, 4.275m, 4.325m and 4.375m.
 3. The internal areas of the residential properties on the upper floors will generally be slightly larger than those on the lower floors because of the reducing thickness of the structural walls on the upper floors.
 4. The A/C Plant Platform of 10/F is located on Roof. Please refer to the floor plan on p. 47.
 5. The rectangular area which is enclosed by walls outside Bedroom 4B on this floor plan houses gas water heaters serving this residential unit on 10/F. For details, please refer to “Mechanical and Electrical Provision Plan” and “Schedule of Mechanical & Electrical Provisions”.
 6. Please refer to glossary on p. 50 for abbreviations shown in the floor plan.

1. 住宅單位之樓板厚度（不包括樓板裝修物料）為275毫米及300毫米。
2. 單位層與層之間的高度（指該樓層之石屎地台面與上一層石屎地台面之高度距離）為3.675米、3.725米、3.775米、3.825米、3.875米、4.025米、4.175米、4.225米、4.275米、4.325米及4.375米。
3. 因住宅物業的較高樓層的結構牆的厚度遞減，較高樓層的內部面積，一般比較低層的內部面積稍大。
4. 屬於10樓單位之空調機平台設於天台。請參考第47頁之樓面平面圖。
5. 平面圖上所顯示於睡房4B外，被牆所圍封的長方形範圍用作放置煤氣熱水爐，以供給10樓住宅單位使用。有關詳細資料，請參考“機電裝置平面圖”及“機電裝置數量說明表”。
6. 有關平面圖中顯示之簡稱，請參閱第50頁之詞彙表。

FLOOR PLANS OF RESIDENTIAL PROPERTIES IN THE DEVELOPMENT
發展項目的住宅物業的樓面平面圖

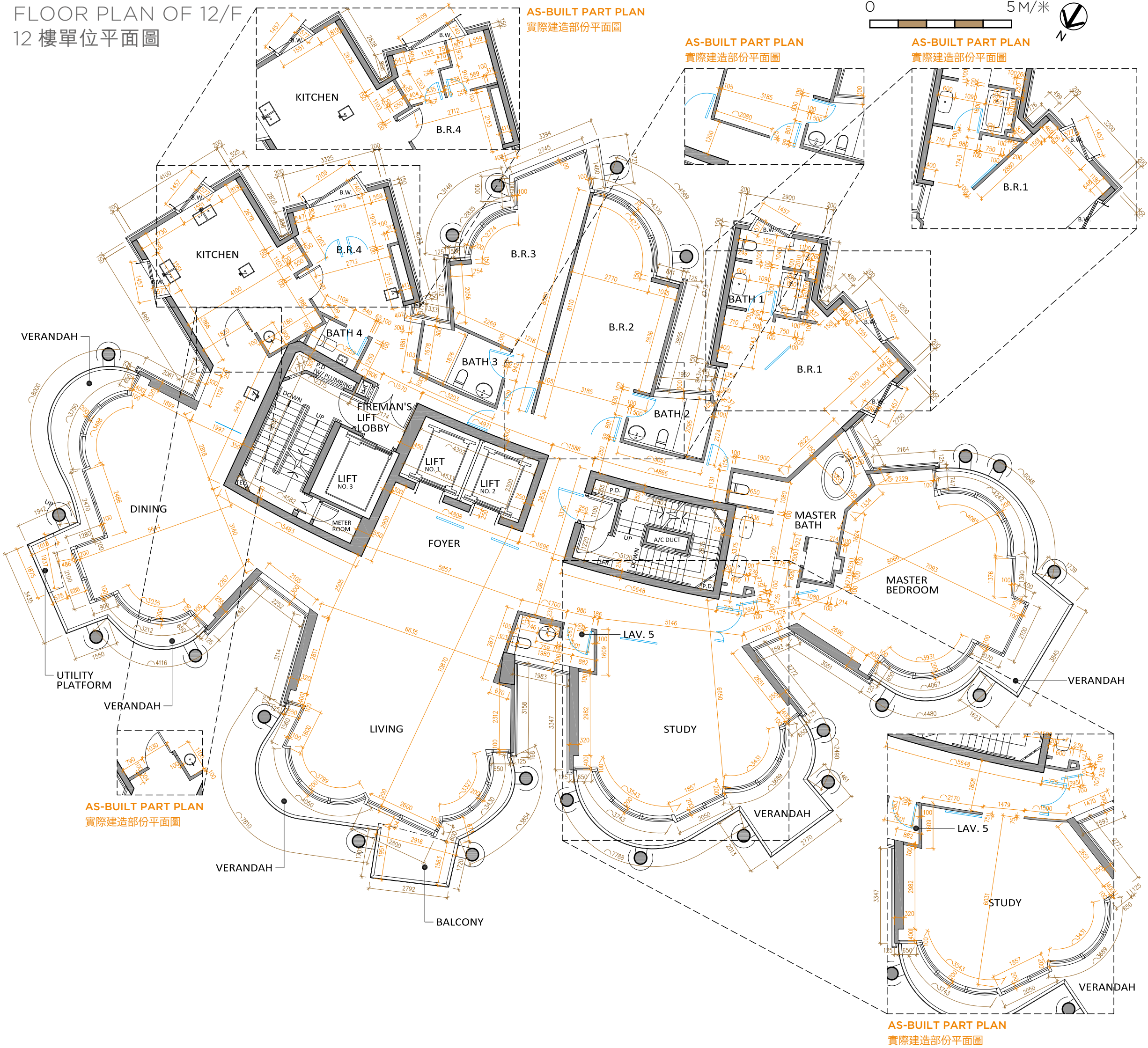


-
1. The thickness of the floor slabs (excluding floor finish) of this residential floor: 275mm and 300mm.
 2. Floor-to-floor height (refers to the height between the top surface of the structural slab of a floor and the top surface of the structural slab of its immediate upper floor): 3.675m, 3.725m, 3.775m, 3.825m, 3.875m, 4.025m, 4.175m, 4.225m, 4.275m, 4.325m and 4.375m.
 3. The internal areas of the residential properties on the upper floors will generally be slightly larger than those on the lower floors because of the reducing thickness of the structural walls on the upper floors.
 4. The A/C Plant Platform of 11/F is located on Roof. Please refer to the floor plan on p. 47.
 5. The rectangular area which is enclosed by walls in Bedroom 4 on this floor plan houses gas water heaters serving this residential unit on 11/F. For details, please refer to “Mechanical and Electrical Provision Plan” and “Schedule of Mechanical & Electrical Provisions”.
 6. Please refer to glossary on p. 50 for abbreviations shown in the floor plan.

1. 住宅單位之樓板厚度（不包括樓板裝修物料）為275毫米及300毫米。
2. 單位層與層之間的高度（指該樓層之石屎地台面與上一層石屎地台面之高度距離）為3.675米、3.725米、3.775米、3.825米、3.875米、4.025米、4.175米、4.225米、4.275米、4.325米及4.375米。
3. 因住宅物業的較高樓層的結構牆的厚度遞減，較高樓層的內部面積，一般比較低層的內部面積稍大。
4. 屬於11樓單位之空調機平台設於天台。請參考第47頁之樓面平面圖。
5. 平面圖上所顯示於睡房4內，被牆所圍封的長方形範圍用作放置煤氣熱水爐，以供給11樓住宅單位使用。有關詳細資料，請參考“機電裝置平面圖”及“機電裝置數量說明表”。
6. 有關平面圖中顯示之簡稱，請參閱第50頁之詞彙表。

FLOOR PLANS OF RESIDENTIAL PROPERTIES IN THE DEVELOPMENT
發展項目的住宅物業的樓面平面圖

FLOOR PLAN OF 12/F
12 樓單位平面圖



-
1. The thickness of the floor slabs (excluding floor finish) of this residential floor: 300mm.
 2. Floor-to-floor height (refers to the height between the top surface of the structural slab of a floor and the top surface of the structural slab of its immediate upper floor): 4.050m, 4.200m, 4.250m, 4.300m, 4.350m and 4.400m.
 3. The internal areas of the residential properties on the upper floors will generally be slightly larger than those on the lower floors because of the reducing thickness of the structural walls on the upper floors.
 4. The A/C Plant Platform of 12/F is located on Roof. Please refer to the floor plan on p. 47.
 5. The lines in blue colour marked on the floor plan show those doors where they are installed. Interior fittings between doors and walls which are installed are not shown on the floor plan.
 6. The rectangular area which is enclosed by walls in Bedroom 4 on this floor plan houses gas water heaters serving this residential unit on 12/F. For details, please refer to “Mechanical and Electrical Provision Plan” and “Schedule of Mechanical & Electrical Provisions”.
 7. Please refer to glossary on p. 50 for abbreviations shown in the floor plan.

NOTES: AS-BUILT PART PLANS OF 12/F

The alteration works done to the Unit of 12/F are shown on the as-built part plans on p. 44. The alteration works have been done either by way of exempted works or minor works under the Buildings Ordinance:

- a) Non-structural partition walls have been added and one of the sinks has been omitted in Kitchen.
- b) Non-structural partition walls have been added and the sink has been omitted in Bedroom 4.
- c) Non-structural partition walls have been added to Bedroom 1 and Bedroom 2.
- d) Study Room is now enclosed with non-structural partition walls and a door opening.

1. 住宅單位之樓板厚度（不包括樓板裝修物料）為300毫米。
2. 單位層與層之間的高度（指該樓層之石屎地台面與上一層石屎地台面之高度距離）為4.050米、4.200米、4.250米、4.300米、4.350米及4.400米。
3. 因住宅物業的較高樓層的結構牆的厚度遞減，較高樓層的內部面積，一般比較低層的內部面積稍大。
4. 屬於12樓單位之空調機平台設於天台。請參考第47頁之樓面平面圖。
5. 平面圖上藍色線顯示門的裝設位置。安裝於門與牆之間之室內裝置並未顯示於平面圖上。
6. 平面圖上所顯示於睡房4內，被牆所圍封的長方形範圍用作放置煤氣熱水爐，以供給12樓住宅單位使用。有關詳細資料，請參考“機電裝置平面圖”及“機電裝置數量說明表”。
7. 有關平面圖中顯示之簡稱，請參閱第50頁之詞彙表。

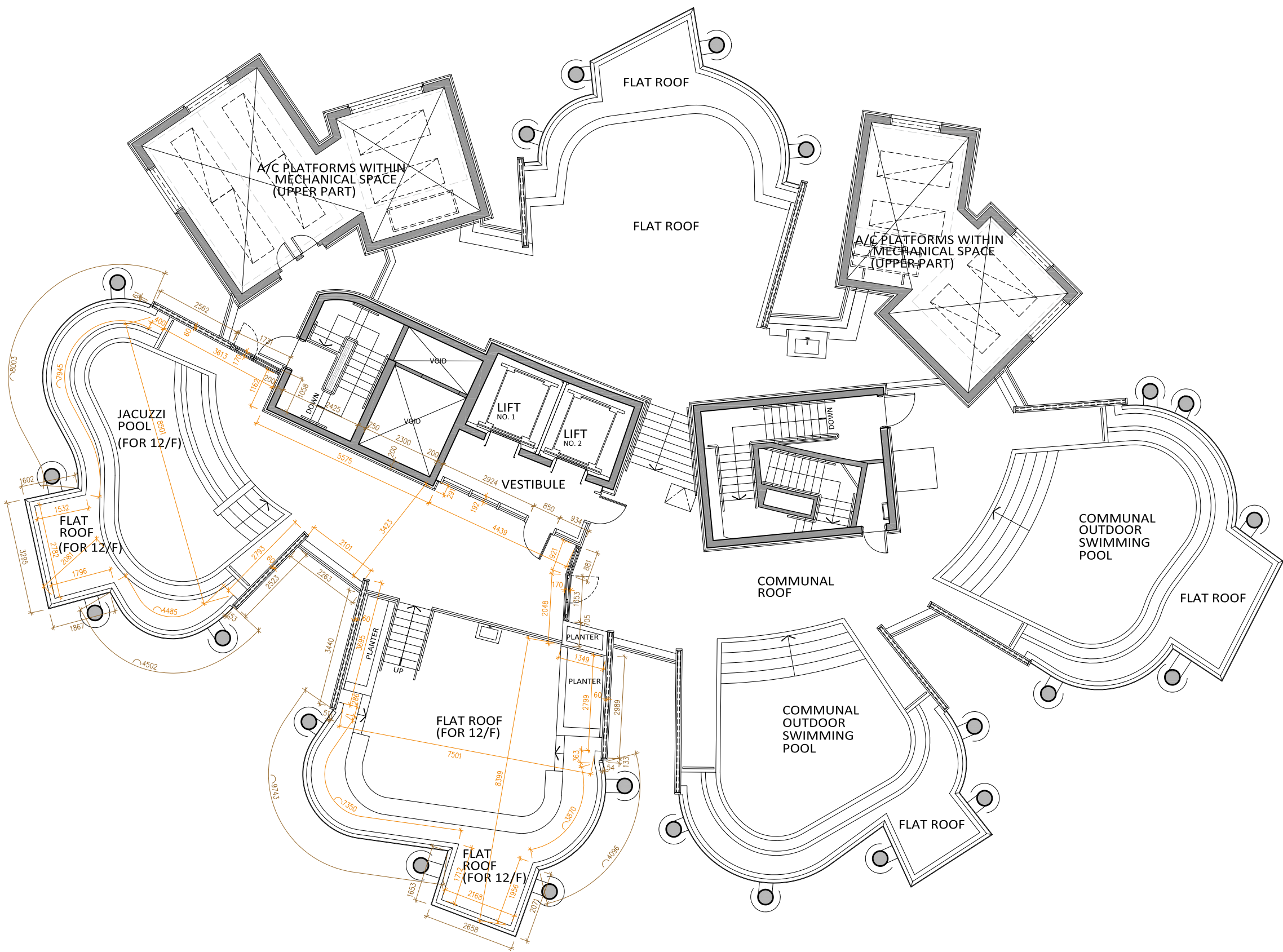
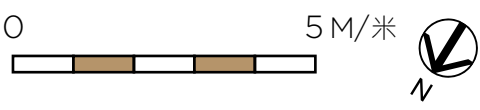
附註：12樓單位實際建造部份平面圖

12樓單位的改動工程顯示於第44頁的實際建造部份平面圖。改動工程均為建築物條例下的獲豁免的工程或小型工程：

- a) 廚房內已加建非結構性間隔牆，另其中一個洗滌盆已被省略。
- b) 睡房4內已加建非結構性間隔牆，另洗滌盆已被省略。
- c) 睡房1及睡房2內已加建非結構性間隔牆。
- d) 書房已被非結構性間隔牆圍封，並設有門口。

FLOOR PLANS OF RESIDENTIAL PROPERTIES IN THE DEVELOPMENT
發展項目的住宅物業的樓面平面圖

FLOOR PLAN OF ROOF AT LEVEL 287.275mPD
主水平基準以上 287.275 米之天台平面圖

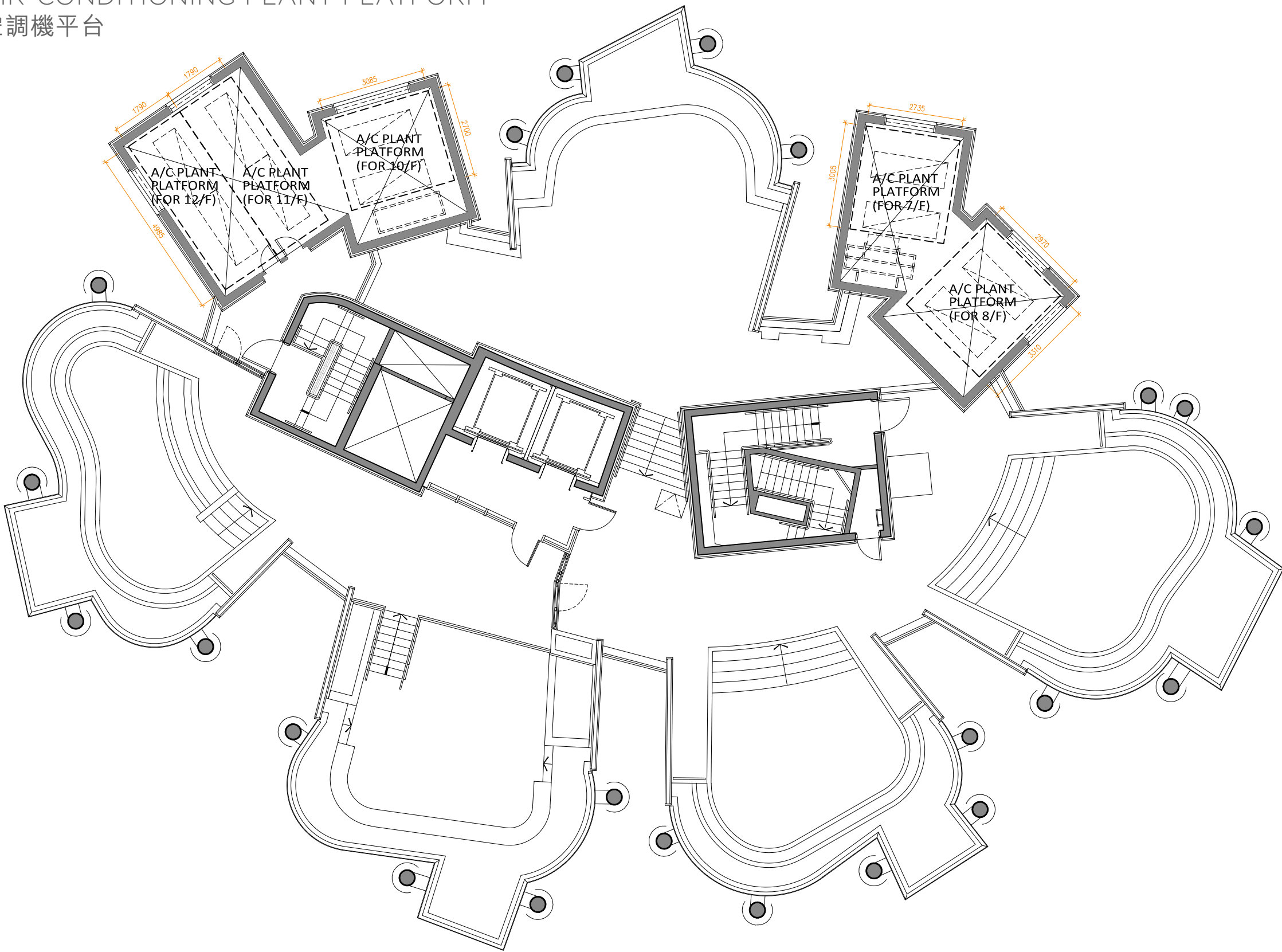
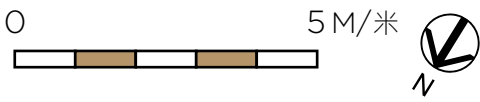


1. “Flat Roof” on this floor plan means the uppermost roof slab of the building.
2. Please refer to glossary on p. 50 for abbreviations shown in the floor plan.

1. 平面圖上所顯示之“平台”為建築物之最高層的天台樓板。
2. 有關平面圖中顯示之簡稱，請參閱第50頁之詞彙表。

FLOOR PLAN OF ROOF AT LEVEL 287.275mPD
主水平基準以上 287.275 米之天台平面圖

AIR-CONDITIONING PLANT PLATFORM
空調機平台



1. A/C plant platform is located on a metal rack, beneath which is the mechanical space being part of the Residential Common Areas and Facilities.
2. Please refer to glossary on p. 50 for abbreviations shown in the floor plan.

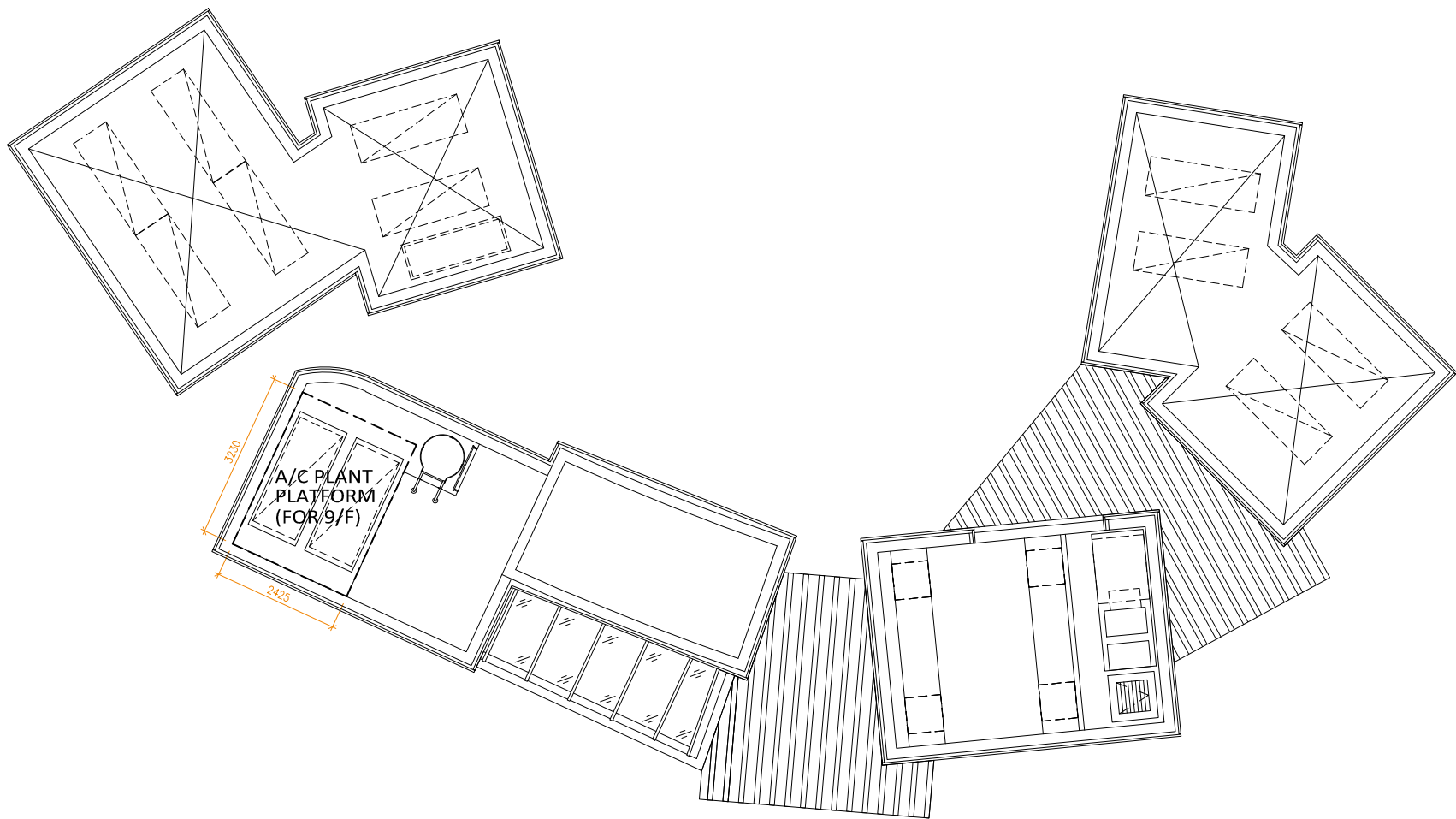
1. 空調機平台位於鐵架上，其底下是屬於住宅公用地方及設施一部份的機械空間。
2. 有關平面圖中顯示之簡稱，請參閱第50頁之詞彙表。

FLOOR PLANS OF RESIDENTIAL PROPERTIES IN THE DEVELOPMENT
發展項目的住宅物業的樓面平面圖

FLOOR PLAN OF UPPER ROOF
上層天台平面圖



AIR-CONDITIONING PLANT PLATFORM
空調機平台

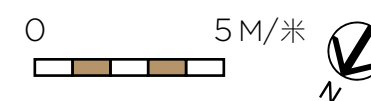


1. Please refer to glossary on p. 50 for abbreviations shown in the floor plan.

1. 有關平面圖中顯示之簡稱，請參閱第50頁之詞彙表。

FLOOR PLAN OF LG/F
低層地下平面圖

AIR-CONDITIONING PLANT ROOM AND POOL FILTRATION PLANT ROOM
空調機房及泳池濾水機房



1. Please refer to glossary on p. 50 for abbreviations shown in the floor plan.
1. 有關平面圖中顯示之簡稱，請參閱第50頁之詞彙表。

FLOOR PLANS OF RESIDENTIAL PROPERTIES IN THE DEVELOPMENT

發展項目的住宅物業的樓面平面圖

GLOSSARY

詞彙表

A/C DUCT = AIR-CONDITIONING DUCT	空調風槽
A/C PLANT PLATFORM = AIR-CONDITIONING PLANT PLATFORM	空調機平台
A/C PLANT ROOM = AIR-CONDITIONING PLANT ROOM	空調機房
A/C PLATFORM WITHIN MECHANICAL SPACE (UPPER PART)	機械空間（上層部份）內的空調機平台
BALCONY	露台
BATH = BATHROOM	浴室
B.R. = BEDROOM	睡房
B.W. = BAY WINDOW	窗台
COMMUNAL OUTDOOR SWIMMING POOL	公用室外泳池
COMMUNAL ROOF	公用平台
DINING = DINING ROOM	飯廳
DISABLED PLATFORM	傷健人士升降台
ELET. DUCT = ELECTRIC DUCT	電線槽
ENTRANCE FOYER	入口前廳
ENTRANCE LIFT LOBBY	入口升降機大堂
FAMILY ROOM	家庭廳
FIREMAN’S LIFT LOBBY	消防升降機大堂
FLAT ROOF	平台
FOYER	前廳
GARDEN AREA	花園
GLASS CANOPY	玻璃遮篷
H.R. = HOSE REEL	消防喉轆
JACUZZI POOL	按摩池
KITCHEN	廚房
LAV. = LAVATORY	洗手間
LAWN	草地
LIFT	升降機
LIVING = LIVING ROOM	客廳
MASTER BATH = MASTER BATHROOM	主人浴室
MASTER BEDROOM	主人睡房
MASTER LAV. = MASTER LAVATORY	主人洗手間
METER ROOM	電錶房
P.D. = PIPE DUCT	管槽
P.D. (W/ PLUMBING) = PIPE DUCT (WITH PLUMBING)	給水管槽
PLANTER	花槽
POOL DECK	泳池平台
POOL FILTRATION PLANT ROOM	泳池濾水機房
RECREATIONAL FACILITIES - FITNESS ROOM	康樂設施 - 健身室
SHOWER ROOM	淋浴室
STUDY = STUDY ROOM	書房
SWIMMING POOL	游泳池
TEL. = TELEPHONE PIPE DUCT	= 電話線管槽
UTILITY PLATFORM	工作平台
VERANDAH	陽台
VESTIBULE	門廊
VOID	中空

AREA OF RESIDENTIAL PROPERTIES IN THE DEVELOPMENT
發展項目中的住宅物業的面積

AREA OF RESIDENTIAL PROPERTIES IN THE DEVELOPMENT

發展項目中的住宅物業的面積

Description of Residential Property 物業的描述		Saleable Area (including balcony, utility platform and verandah, if any) sq m (sq ft) 實用面積 (包括露台, 工作平台及陽台 (如有)) 平方米 (平方呎)	Area of other specified items (Not included in the Saleable Area) 其他指明項目的面積 (不計算入實用面積) sq m (sq ft) 平方米 (平方呎)									
Block Name 大廈名稱	Floor 樓層		Air-conditioning plant room 空調機房	Bay window 窗台	Cockloft 閣樓	Flat roof 平台	Garden 花園	Parking space 停車位	Roof 天台	Stair-hood 梯屋	Terrace 前庭	Yard 庭院
OPUS HONG KONG 傲璇	G/F & 1/F Flat A (Duplex) 複式A單位	481.962 (5,188) Balcony 露台: 3.336 (36) Utility Platform 工作平台: - Verandah 陽台: 10.539 (113)	17.460 (188)	3.250 (35)	-	-	301.444 (3,245)	-	-	-	-	-
	G/F & 1/F Flat B (Duplex) 複式B單位	447.661 (4,819) Balcony 露台: 5.000 (54) Utility Platform 工作平台: 1.500 (16) Verandah 陽台: 24.261 (261)	18.662 (201)	1.817 (20)	-	-	327.040 (3,520)	-	-	-	-	-
	2/F	478.077 (5,146) Balcony 露台: 5.000 (54) Utility Platform 工作平台: 1.500 (16) Verandah 陽台: 49.659 (535)	12.785 (138)	1.582 (17)	-	4.858 (52)	-	-	-	-	-	-
	3/F	476.785 (5,132) Balcony 露台: 5.000 (54) Utility Platform 工作平台: 1.500 (16) Verandah 陽台: 45.697 (492)	19.966 (215)	1.582 (17)	-	-	-	-	-	-	-	-
	5/F	478.861 (5,154) Balcony 露台: 5.000 (54) Utility Platform 工作平台: 1.500 (16) Verandah 陽台: 44.826 (483)	16.945 (182)	1.582 (17)	-	-	-	-	-	-	-	-
	6/F	483.022 (5,199) Balcony 露台: 5.000 (54) Utility Platform 工作平台: 1.500 (16) Verandah 陽台: 45.557 (490)	11.203 (121)	1.582 (17)	-	-	-	-	-	-	-	-
	7/F	489.719 (5,271) Balcony 露台: 5.000 (54) Utility Platform 工作平台: 1.500 (16) Verandah 陽台: 46.731 (503)	-	1.582 (17)	-	-	-	-	-	-	-	-

Description of Residential Property 物業的描述		Saleable Area (including balcony, utility platform and verandah, if any) sq m (sq ft) 實用面積 (包括露台, 工作平台及陽台 (如有)) 平方米 (平方呎)	Area of other specified items (Not included in the Saleable Area) 其他指明項目的面積 (不計算入實用面積) sq m (sq ft) 平方米 (平方呎)									
Block Name 大廈名稱	Floor 樓層		Air-conditioning plant room 空調機房	Bay window 窗台	Cockloft 閣樓	Flat roof 平台	Garden 花園	Parking space 停車位	Roof 天台	Stair-hood 梯屋	Terrace 前庭	Yard 庭院
OPUS HONG KONG 傲璇	8/F	495.252 (5,331) Balcony 露台: 5.000 (54) Utility Platform 工作平台: 1.500 (16) Verandah 陽台: 48.177 (519)	-	1.582 (17)	-	-	-	-	-	-	-	-
	9/F	490.046 (5,275) Balcony 露台: 5.000 (54) Utility Platform 工作平台: 1.500 (16) Verandah 陽台: 42.408 (456)	-	1.582 (17)	-	4.801 (52)	-	-	-	-	-	-
	10/F	494.452 (5,322) Balcony 露台: 5.000 (54) Utility Platform 工作平台: - Verandah 陽台: 45.541 (490)	-	1.582 (17)	-	2.899 (31)	-	-	-	-	-	-
	11/F	502.482 (5,409) Balcony 露台: 5.000 (54) Utility Platform 工作平台: 1.500 (16) Verandah 陽台: 49.285 (530)	-	1.582 (17)	-	-	-	-	-	-	-	-
	12/F	505.786 (5,444) Balcony 露台: 5.000 (54) Utility Platform 工作平台: 1.500 (16) Verandah 陽台: 50.731 (546)	-	1.582 (17)	-	-	-	-	140.099 (1,508)	-	-	-

1. The saleable area is calculated in accordance with Section 8 of the Residential Properties (First-hand Sales) Ordinance.

2. The floor areas of balcony, utility platform and verandah (if any) are calculated in accordance with Section 8 of the Residential Properties (First-hand Sales) Ordinance.

3. The area of other specified items (not included in the saleable area) are calculated in accordance with Part 2 of Schedule 2 to the Residential Properties (First-hand Sales) Ordinance.
1. 實用面積是按《一手住宅物業銷售條例》第8條計算。

2. 露台、工作平台及陽台（如有）之樓面面積是按《一手住宅物業銷售條例》第8條計算。

3. 其他指明項目的面積（不包括在實用面積內）是按《一手住宅物業銷售條例》附表2第2部計算。

Note: The areas in square metre have been converted to square foot based on a conversion rate of 1 square metre = 10.764 square feet and rounded off to the nearest integer.
附註：以平方米列出的面積以1平方米=10.764平方呎換算至平方呎並以四捨五入至整數。